

# PANORAMA

Salisbury University's  
Guide to Cultural &  
Educational Events  
SPRING 2021



**Wildfowl Art of Central  
and South America**  
Birds are interpreted  
through important artistic  
traditions • p. 4



**The Power of Humanity**  
This exhibit details the  
service of the Red Cross  
on the Eastern Shore  
through historic artifacts,  
documents and more • p. 5

## Centroid Towns

Explore the fascinating  
portraits and stories from  
the symbolic center of the  
United States • p. 5



**Creative Writing Series**  
Learn about writer Kathryn  
Merwin and her first poem  
collection *Womanskin* • p. 11

# welcome

## A Message from the President

We are still here! Thanks to the diligence of our campus community, as I write this, Salisbury University has remained open to its students and continues to produce the cultural and educational events that we are delighted to share with you.



Once again, this publication of *Panorama* is a bit different – some events don't have dates yet and the way to register for online access is evolving. Due to the impact of COVID-19, all public events continue in a virtual format, with most requiring preregistration. Instead of a calendar format, again we've grouped events by sponsor to make it easier to understand the unique way each group is delivering its offerings. If you aren't already in the habit, please be sure to visit our campus events webpage – [www.salisbury.edu/events](http://www.salisbury.edu/events) –

frequently to see the latest information on all our offerings. As we've adapted to our virtual environment, this page has evolved into a sort of online *Panorama*.

We invite you to drop in on one or all of the classes that are part of our annual, spring Changing Climate: Changing World Series, this year focusing on "Climate to COVID: Seeing the Syndemic." SU's Institute for Public Affairs and Civic Engagement provides opportunities to explore issues surrounding our recent election. For those looking for professional development, both our School of Social Work and Center for Healthy Communities have courses, conferences and lectures to support your needs. Our long-standing Philosophy Symposium and celebrations of African American History Month and Women's History Month return this spring, and our new Creative Writing Reading Series continues as well. The Music, Theatre and Dance Department is finalizing its spring calendar, so stay tuned for details on its students' usual amazing performances.

If you are yearning for a little in-person culture, our Ward Museum of Wildfowl Art and SU Art Galleries – Downtown Campus are both open to the public, following their screening protocols. In the summer, the Ward Museum hosts its revamped Photo Festival, which is currently virtual, and its annual Delmarvalous Festival returns, which is planning to have some in-person outdoor activities. Our Nabb Research Center continues its engaging series of exhibits available through its website, including a look at "The Power of Humanity: The Red Cross on Delmarva."

I hope you took advantage of our fall events and continue to connect with SU in the spring. Our faculty and students have shown remarkable resiliency and are producing amazing works, which we know you will enjoy, either virtually or in person when we have overcome the pandemic. I look forward to the day we can rejoin our community on campus freely, but in the meantime, we'll reach out to you through our screens with the best we have to offer.

Be well and I hope to see you soon!

A handwritten signature in black ink, appearing to read "Charles A. Wight". The signature is fluid and cursive.

Charles A. Wight  
President, Salisbury University



## What You Need to Know

### Everything Is Virtual & Can Change!

All events highlighted in this issue are available in a virtual format. As public response to COVID-19 evolves, please understand all information provided here is subject to change.

Visit SU's website for the most recent campus-related information: [www.salisbury.edu/coronavirus](http://www.salisbury.edu/coronavirus).

### Virtual Event Preregistration

Most events require preregistration so you can receive a secure link to view them. For many, this is done through Eventbrite by creating a free, online account, which will provide links and reminders for the events for which you've registered. Instructions on how to register for Eventbrite are included on the Events page of the SU website at [www.salisbury.edu/events](http://www.salisbury.edu/events).

### Campus Buildings Are Closed To The Public

All buildings at SU are closed to the public except by invitation. The health and safety of our students are central to our mission, and as such, the University is limiting access to campus to our students and the faculty and staff necessary to educate them and provide integral services. Please note that the Guerrieri Academic Commons is among those buildings closed to the public, including the Nabb Research Center for Delmarva History and Culture, which is providing several offerings to the community virtually (see page 5). While exterior portions of the campus remain open, only those needing to be at SU for academic, residential or work purposes are encouraged to be on campus.

### Invited Guests

Those coming to campus as invited guests must follow SU's COVID-19 screening and face mask policies (see highlights below) and maintain a distance of at least 6 feet between themselves and others at all times. Visitors must display a daily visitor badge, available from the screening locations listed below. Invited guests planning to park on campus at any time must register for a printable permit at least 24 hours in advance of their visit at [www.salisbury.edu/parking](http://www.salisbury.edu/parking).

### Screening Policy

All visitors invited to campus attending sponsored or hosted events must check in for a COVID-19 screening and visitor pass at the event location. The event sponsors or hosts will provide the screening and pass. If you need more information on screening requirements, please contact the event sponsor or host. Invited visitors to campus not attending sponsored or hosted events, should check in at the following locations to be screened and receive a visitor pass:

- Weekdays - Holloway Hall main entrance, 8 a.m.-4:30 p.m.
- All Other Times - SU Police Department, East Campus Complex, Power Street (walk-up, ring buzzer at door)

As a safety precaution, individuals may be asked to show proof of screening clearance, visitor pass or proof of event by University officials. Access may be denied for non-compliance.

Please note: These times and locations may change as needed during the semester. For the most up-to-date information, visit [www.salisbury.edu/coronavirus](http://www.salisbury.edu/coronavirus).

### Face Mask Policy

Invited guests must wear masks indoors at all times. Masks also must be worn outdoors when appropriate physical distancing (at least 6 feet) is not possible. This policy extends to all of the University campus and other property owned, leased or controlled by the University. Failure to comply with this policy may result in limitation or denial of access to University facilities and services. Some exceptions and exemptions do exist. Those, along with the full policy can be found at [www.salisbury.edu/news/SU-Masking-Policy.pdf](http://www.salisbury.edu/news/SU-Masking-Policy.pdf).

## Other Ways to Stay Connected with SU

### Celebrate Our Diversity

Recognizing the inclusive nature of exposing campus and community members to diverse events and ideas, SU's Cultural Affairs Office has moved under the umbrella of the Office of Diversity and Inclusion (ODI). Once travel and gathering restrictions are lifted, look for the return of the University's celebrated Cultural Affairs offerings.



### Explore SU

Know a student who is interested in attending SU? Currently, our Admissions team is able to offer limited daily tours to individual, registered families. You also can take a virtual tour, chat remotely with counselors, and view information sessions with current students, parents and faculty online. Learn more at [www.salisbury.edu/visit](http://www.salisbury.edu/visit). The Admissions team is on hand from 8 a.m.- 4:30 p.m. Monday-Friday to answer any questions you may have: [admissions@salisbury.edu](mailto:admissions@salisbury.edu) or 410-543-6161.



### Get Social With Us

Missing the Salisbury University campus? Check out a video tour on our YouTube channel: [www.youtube.com/salisburyuniversity](http://www.youtube.com/salisburyuniversity). View our playlists to learn more about SU, including spotlights on each of our academic programs and other areas of campus life. You can even take a virtual stroll through the Arboretum: [www.salisbury.edu/arboretum](http://www.salisbury.edu/arboretum). Be sure to follow SU on Facebook, Twitter and Instagram.

### Go Gulls!

As Sea Gull sports evolve in response to COVID-19 restrictions, you can get the latest news and connect with other Gull enthusiasts. Fans can follow the SU Sea Gulls on **Facebook, Twitter and Instagram** @suseagulls.



On the Cover: The Allegheny Trio • p. 3

# Music, Theatre and Dance Department

The Department of Music, Theatre and Dance presents an array of great online performances for the spring 2020 semester! For the most up-to-date information on dates, times and streaming instructions, visit:

[www.salisbury.edu/performingarts](http://www.salisbury.edu/performingarts)

Fulton Box Office: 410-543-6228 • [fultonboxoffice@salisbury.edu](mailto:fultonboxoffice@salisbury.edu)

## Planned Spring Performances:

■ The Allegheny Trio

■ Singers' Showcase



■ Student Vocal & Instrumental Recitals, Including:

- Katherine Bobele, violin
- Anthony Constantine, viola
- Olivia Davidson, voice
- Geneque Garrison, piano
- Jessica Graver, voice
- Christopher Sajadi, violin

■ Celebration of Great Composers

■ Bobbi Biron Theatre Program Spring Production

■ Salisbury Percussion Festival

■ SU Dance Company Spring Dance Concert

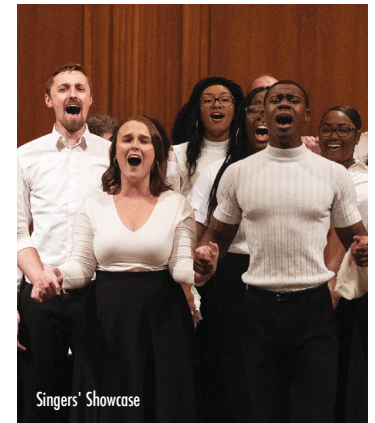
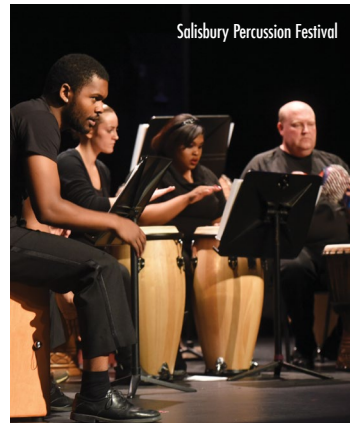
■ Salisbury Symphony Orchestra

■ Salisbury/University Chorale Concert

■ Salisbury Pops Concert

■ Jazz Ensemble Concert

■ Piano/Strings Concert



## Salisbury Symphony Orchestra

For virtual concert dates and details as they are finalized visit:  
[www.SalisburySymphonyOrchestra.org](http://www.SalisburySymphonyOrchestra.org)

**Into the Forest Chamber Concert**

**March**

**I Got Rhythm Chamber Concert**

**May**



# Ward Museum of Wildfowl Art

The Ward Museum is open to the public Wednesday-Sunday, 11 a.m.-4 p.m. There are special hours for seniors and vulnerable populations 9-11 a.m. Wednesday-Friday.

All visitors are required to:

- Wear masks covering their mouths and noses while inside. Masks are required outside on the grounds when social distancing is not possible.
- Stop at the health screening station at the front entrance of the Museum before entering the galleries, Treetops Gifts or other areas inside the Museum.
- Maintain a distance of at least 6 feet from others.

For Museum details and admission costs visit: [www.wardmuseum.org](http://www.wardmuseum.org)

## ■ Exhibits

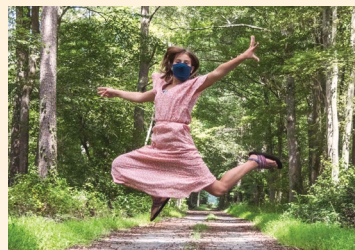


### **Nature in the Abstract: The Art of Eileen Olson Through February 14 Welcome Gallery**

Become immersed in the vibrancy and power of nature, as interpreted through the work of Delaware-based fine artist Olson. The exhibit features the unique abstract expressionist style Olson is known for, and it includes brand new works debuting at the Museum, which explore the dynamic natural world around us.

### **Student Art Show: Inspiration from Isolation February 19-May 2 Welcome Gallery**

All Pre-K-12 students of Delmarva are invited to submit their artwork to the annual Student Art Show held in-person and online as a virtual exhibit. For 2021, the theme is "Inspiration from Isolation," collecting student works of all media expressing the connections between the environment and social distancing – getting outdoors, staying indoors, seeing new wildlife on adventures or watching familiar wildlife from windows. Accepting digital and physical drawings, paintings, poetry, fiction, nonfiction, sculptures, photography, video, and more.



## **Wildfowl Art of Central and South America Exhibit**

**May 21-September 19 • LaMay Gallery**

From Mexican amate paintings, to Peruvian pottery and Chilean arpilleras, this exhibit features the work of both local and international artists, interpreting birds through important artistic traditions.



## ■ Events



### **Youth Environmental Action Summit**

*A Community Project  
of the Ward Museum  
March 2021*

Celebrating youth voice and environmental stewardship for the third year, the summit goes virtual, bringing together 3rd-12th grade students and community partners for an online conference. Seeking college students and staff interested in using their experience and expertise to network with and support local young people.

### **Ward Museum Photo Festival July 16-18**

On its 10th anniversary, the Ward Museum's Art in Nature Photo Festival is getting a new look ... and name! With multiple categories to enter virtually – and physically if pandemic restrictions allow – the rebranded Ward Museum Photo Festival is keeping its roots and spreading its wings. Watch the Ward Museum's website for updates and more information on categories, how to enter, a schedule of events and more.



### **Delmarvalous Festival Featuring the Chesapeake Challenge Saturday, August 14**

This popular, annual event is now in a hybrid online and outdoor format. Learn about the cultural traditions and art forms important to the communities of Delmarva – through instructional videos, conversational interviews, arts demonstrations and more. The festival once again hosts the time-honored Chesapeake Challenge. This annual decoy competition celebrates the history and living heritage of wildfowl carving, showcasing the talent of decoy makers whose work is rooted in wildfowl hunting traditions.

### **Storytelling with Purpose: Documentary Quilts of Dr. Joan M. E. Gaither**

**Through May 9 • LaMay Gallery**

From emancipation in Maryland, to life as a young woman in the 1960s, to Black watermen of the Chesapeake – Gaither's story quilts tell powerful biographical stories of her life, the lives of those around her and the lives of those who came before her. An artist, educator and 2017 Maryland Heritage Award winner, Gaither is a master at interpreting autobiographical and community stories through multimedia quilts – sometimes on her own and often with the assistance and vision of whole communities. View a made-for-exhibit Eastern Shore quilt created with the participation of regional communities engaged in workshops leading up to the show.



# SU Art Galleries

Exhibits and events are available virtually and at SU Art Galleries | Downtown. SU Art Galleries | Downtown can accept visitors by appointment. Visitors must pass an on-site screening for COVID-19 symptoms, and adhere to face mask and social distancing guidelines (see page 2). For virtual exhibit and event registration and to schedule an appointment, visit: [www.suartgalleries.org](http://www.suartgalleries.org)

## Centroid Towns - Nate Larson

January 19-April 2

SU Art Galleries | University Gallery

Virtual Artist Talk: Thur., Feb. 4, 5:30 p.m.

Centroid Towns is an anthology documentary project using photography, oral history interviews and local archive research to study the 25 cities that have been the mean center of population of the United States. This symbolic center is calculated every 10 years to accompany the U.S. Census, first located in 1790 near Chestertown, MD, and moving steadily westward, currently residing near Plato, MO.



## 2021 Art Department Faculty Exhibition

February 1-April 2

SU Art Galleries | Downtown

Virtual Gallery Talk with Art Faculty: Thur., April 1, 5:30 p.m.

Once again our distinguished faculty are sharing their more recent creative work. Diverse media, including hot glass, ceramics, painting, drawing, installation, sculpture, photography and new media, fill the downtown galleries.

## 63rd Biannual Senior Exhibitions

April 19-May 7

SU Art Galleries | University Gallery & Downtown

Virtual Awards Ceremony: Friday, April 30, 5 p.m.

Graduating seniors present their best work in two exhibitions taking place in SU's main campus gallery and downtown. Emerging designers and artists plan all aspects of these exhibitions as part of their capstone experience at SU.



# Nabb Research Center for Delmarva History and Culture

Though its facilities are closed to the public, the Nabb Center still has much to share with the community virtually and will continue to respond to inquiries and assist researchers. Follow Nabb on Facebook and Instagram to learn about new activities and collections.

[www.salisbury.edu/libraries/nabb](http://www.salisbury.edu/libraries/nabb) • [nabbcenter@salisbury.edu](mailto:nabbcenter@salisbury.edu)

## Online Exhibits

The Nabb Research Center is frequently adding to its collection of online exhibits. To see new offerings throughout the year or to explore any of its past online exhibits, check their online exhibits page often: [libapps.salisbury.edu/nabb-online](http://libapps.salisbury.edu/nabb-online)

## Delmarva: People, Place & Time

This online version of our permanent exhibit highlights various aspects of Delmarva history and culture, including Native Americans and early settlers, slavery and the Underground Railroad, a glimpse of life in an early 19th-century homestead, and the importance and impact that working the land and the water has had on the region.



## Decoding Political Propaganda

January 25-July 16

Guerrieri Academic Commons, 1st Floor Lobby & Online

What is propaganda? How can you recognize the techniques used by propagandists to influence people's perceptions and behaviors? Utilizing posters and printed materials from the Nabb Center's Special Collections, explore the history of propaganda and learn how to identify common devices used by nations around the world to sway public opinion.

## The Power of Humanity: The Red Cross on Delmarva

January 25-July 16

Thompson Gallery & Online

Whether assisting those impacted by the influenza epidemic of 1918 or the current COVID-19 pandemic, helping families on the home front, or providing relief efforts to Hurricane Katrina, Red Cross chapters across Delmarva have rallied to offer support in times of crisis and need. *The Power of Humanity* details the long and varied service of the Red Cross on the Eastern Shore through historic artifacts, documents and photographs in the Nabb Center's collection.





Remember the 4th holiday banner, 1860s, Courtesy of National Museum of American History

## Voices & Votes: Democracy in America

August 14-September 25

Guerrieri Academic Commons, 1st Floor Lobby & Online

The Nabb Center is pleased to be one of five communities selected by Maryland Humanities to host *Voices and Votes: Democracy in America*, a Smithsonian traveling exhibition. *Voices and Votes* is based on a major exhibition currently on display at the Smithsonian's National Museum of American History and features historical and contemporary photos; educational and archival video; engaging multimedia interactives; and historical objects like campaign souvenirs, voter memorabilia and protest material. Our democracy demands action, reaction, vision and revision as we continue to question how to form "a more perfect union." How do you participate as a citizen? From the revolution and suffrage, to civil rights and casting ballots, everyone in every community is part of this ever-evolving story – the story of democracy in America.



## Virtual Tours



### Nabb Center Virtual Tour

This behind-the-scenes tour of the Nabb Research Center highlights its state-of-the-art facility and historical resources. The tour can be accessed in Clio, a mobile app and website that guides the public in exploring historical and cultural sites around the country. Take the virtual tour and learn more about how the Nabb Center preserves and presents the history of Delmarva: [theclio.com/entry/6097](http://theclio.com/entry/6097)

### Salisbury University Walking Tour

Take a virtual tour of SU's Main Campus and learn more about the history and evolution of Salisbury University from its oldest building, Holloway Hall, constructed for Maryland State Teachers College in 1925 to its most recent addition, the Guerrieri Academic Commons, built in 2016 and recently named among the top 20 libraries in the nation by The Princeton Review. [theclio.com/tour/1588](http://theclio.com/tour/1588)



## Internet Archive

The internet archive provides a free platform to preserve and make digital content accessible online, opening the door to Delmarva's rich history to the world. This has allowed the Nabb Center to share hundreds of previously inaccessible sources, including SU and Wicomico County public high school yearbooks, transcribed sources, audio recordings, digitized manuscripts, and more. [archive.org/details/salisbury\\_universitylibrariesnabb\\_researchcenter](http://archive.org/details/salisbury_universitylibrariesnabb_researchcenter)

Explore archival collections through the finding aid portal: [libapps.salisbury.edu/nabb-archives](http://libapps.salisbury.edu/nabb-archives)



## Flickr Collections

Flickr is the home for the Nabb Center's online photograph collections and now includes nearly 10,000 images in 17 albums. Highlights include a treasure trove of 3,500 local photos from Walter Thurston, over 1,200 University Archive photos, hundreds of fire and disaster-related photos from Fred Grier, postcards from the John Jacob collection, the oldest known photo of downtown Salisbury, and several scrapbooks documenting various local histories. View the collections at: [flickr.com/nabbresearchcenter](http://flickr.com/nabbresearchcenter)

## Archiving Projects Call for Collections

### COVID-19 Collection

The University Archives is collecting materials documenting personal experiences during the COVID-19 pandemic from SU students, faculty, staff and alumni. Donations can include, but are not limited to, digital or handwritten journal entries, photographs, vlogs, or artwork. For more information or to fill out a submission form and donate your materials, go to: [www.salisbury.edu/libraries/nabb\\_collections/covid19.aspx](http://www.salisbury.edu/libraries/nabb_collections/covid19.aspx)

Want to participate but don't know where to start? Check out the journal topics list and downloadable surveys on the website.

### Black Lives Matter Delmarva

The Nabb Center is collecting digital content to document Delmarva's activism and response to racial injustices in order to make sure this movement and the voices of the people are remembered. If you've documented recent demonstrations or participated in other ways through social media, photos or writing, the Nabb Center staff want to ensure that it is preserved for future generations. Please contact Ian Post at [impost@salisbury.edu](mailto:impost@salisbury.edu).



MWD Photos, Courtesy Nabb Research Center

# Changing Climate: Changing World Series

Students can register for 1 credit on GullNet (3211). Anyone on campus or in the community can participate in the course without course credit by emailing your name and SU connection (student, employee or community member) to [FultonSchool@salisbury.edu](mailto:FultonSchool@salisbury.edu).



## IDIS 205-750: Climate to COVID: Seeing the Syndemic

**Mondays, January 25-May 3  
(except March 15) &  
Wednesday, May 12  
7-8:30 p.m. • Via Zoom**

The problems of rapid environmental change, pandemic infectious disease, obesity and under-nutrition are co-occurring problems that may be

understood as a "syndemic" because of their global reach and the common factors that drive them. The interconnected roots and impacts of this syndemic are increasingly evident through the health and socioeconomic disparities now amplified by COVID-19 across diverse populations. The course explores causes and solutions to the syndemic from various disciplinary perspectives at different levels of analysis through lectures and discussions with experts from within and outside the SU community.

■ **Jan. 25: Seeing a Syndemic: From Arts to Zoology**

Karl Maier, Psychology

■ **Feb. 1: Basics of Climate Change**

Brent Skeeter & Darren Parnell, Geography & Geosciences

■ **Feb. 8: Ecological Impacts of Human-Induced Climate Change**

Alexandria McCombs, Geography & Geosciences

■ **Feb. 15: Crossing Over: The Link Between Climate Change, the Global Wildlife Trade & Emerging Diseases**

Mary Roman Gunther, Biological Sciences & Elizabeth Ragan, History

■ **Feb. 22: Basics of COVID Panel**

■ **March 1: Local COVID Response Panel**

■ **March 8: COVID: The Material Impacts for Environmental Protection & Social Change**

Sarah Surak, Political Science & Environmental Studies

■ **March 22: Sustainable Food Systems: Seeing Solutions to the Syndemic**

Sarah Reinhardt, Union of Concerned Scientists

■ **March 29: Climate Change, COVID & Environmental Justice**

Adrienne Hollis, Union of Concerned Scientists

■ **April 5: Climate & COVID Impacts on Essential(ly Forgotten) Workers**

Amy Liebman, Migrant Clinicians Network & Sulma Guzman, Centro de los Derechos del Migrante, Inc.

■ **April 12: Climate, Borders & Human Migration**

Todd Miller, Journalist & Author

■ **April 19: A Syndemics Lens to the 2020 Protests in Portland**

Dennis Leoutsakas, Communication

■ **April 26: The Psychology of Climate & COVID: Common Threads from Denial to Dread**

Karl Maier, Psychology

■ **May 3: Artist & Principal at Biome Studio Heather Theresa Clark**

■ **May 12 (Wednesday): Conclusions & Diverse Disciplinary Perspectives Panel**

Sponsored by the Fulton Sustainability Committee.

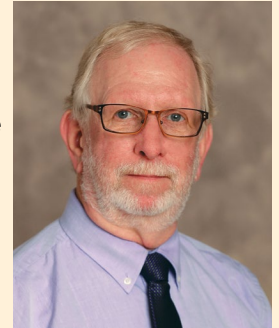
# Institute for Public Affairs and Civic Engagement (PACE)

For more information on PACE events: [www.salisbury.edu/pace](http://www.salisbury.edu/pace)  
410-677-5054

## The Rhetoric of Presidential Inaugural Addresses: A Comparison of the Inauguration Speeches through History

**Tuesday, January 26  
7-8:30 p.m. • Via Zoom**

**Sign Up:** <http://bit.ly/presidentaddressrhet>  
Join Paul Scovell, Communication, for an analysis of the important, memorable and infamous inaugural speeches throughout American history. Examine speeches from George Washington through Joseph R. Biden's inauguration on January 20, 2021, to understand the catch phrases and promises made by newly elected presidents.



## Civic Reflection Dialogue: The Black Family

**Tuesday, February 2  
3:30-4:30 p.m. • Via Zoom**

**Sign Up:** <http://bit.ly/crfeb2021>

African American History Month is a wonderful opportunity to celebrate, discover and reflect on the history, culture and contributions of African Americans. The reflection focuses on the 2021 theme of African American History Month: "The Black Family: Representation, Identity and Diversity."

Co-sponsored by PACE and the African American History Month Committee – see page 10 for more African American History Month events.

## The Art & Science of Running for Office March 1-14 • Via Zoom/ Web Access Through MyClasses Canvas

Free for SU Members with ID; Minimal Cost to Community Members  
Find More Information & Sign Up: <http://bit.ly/runforofficetraining>

This top-to-bottom campaign training workshop is for students and community leaders considering a run for public office, and future campaign activists looking to make a substantive contribution to an electoral effort. This training uses 4 online training units and 5 live (Zoom) training units. Program is run by alumnus George Rakis, Political Science.





# Center for Healthy Communities



## Civic Reflection Training

**Saturday, April 10**

**Noon-4 p.m. • Via Zoom**

Free for SU Members with ID; Minimal Cost to Community Members

Sign Up: <http://bit.ly/crtraining2021>

Learn how to engage in deeper, more productive conversations. The Center for Civic Reflection offers a public training in concepts and strategies of civic reflection. A humanities-based conversation model, civic reflection helps groups and organizations explore compelling issues and pressing themes through constructive dialogue.

SU's Center for Healthy Communities benefits the local community through workforce development grants, professional continuing education opportunities, and partner engagement areas via community service grants and community-based learning.

Find events open for registration, including details and costs: [www.eventbrite.com/o/school-of-social-work-29846186005](http://www.eventbrite.com/o/school-of-social-work-29846186005)

Follow the CHC on Facebook:

[www.facebook.com/SUcenterforhealthycommunities](http://www.facebook.com/SUcenterforhealthycommunities)



## Third Annual Human Trafficking Conference

**Friday, January 29**

**8:30 a.m.-4:30 p.m.**

## Diversity & Inclusion Series Part 4: Men's Mental Health Across the Lifespan

**Thursday, February 11**

**10 a.m.-Noon**

## Delivering Patient-Centric Care to Deaf & Hard-of-Hearing Individuals

**February 26 & March 8**

**Times TBA**

## Social Work Licensure Preparation Course

**March 6-7**

**Times TBA**

## Diversity & Inclusion Series Part 5: Intersectionality in Marginalized Populations

**Thursday, March 11**

**10 a.m.-Noon**

## Annual Social Work Appreciation Month Conference

**March Date TBA**

## Social Work Appreciation Lunch & Learn

**March Date TBA**

## Diversity & Inclusion Series Part 6: The Impact of Racism on Mental Health

**Thursday, April 8**

**10 a.m.-Noon**

## Child Abuse & Neglect Prevention Annual Conference

**April Date TBA**

## Second Annual Infant & Early Childhood Mental Health Conference

**Spring Date TBA**

## Understanding Medical Cannabis

**Spring Date TBA**



## Tuesdays • 3:30-5 p.m. • Via Zoom

Register to receive live link: [bit.ly/fultoncolloquiasp21](https://bit.ly/fultoncolloquiasp21)

Featuring the teaching, scholarship and service of faculty members from across the Fulton School of Liberal Arts, the colloquia celebrate both the work of individual faculty and our disciplinary diversity.

For more information call 410-543-6450.

## International Exchanges without Travel: Connecting Classrooms Across the Globe

### January 19

COVID-19 limited student travel, but several faculty members found innovative ways for students to gain international experience without leaving the country. Brian Stiegler, Associate Provost for International Education; Sarah Surak, Political Science and Environmental Studies; Lori DeWitt, Communication; Melany Trenary, Communication; Tina Reid, Nursing; Sally Perret, Modern Languages and Intercultural Studies; and David Burns, Communication, discuss partnering with faculty across the globe to enhance the classroom learning experience.

## Fulton Faculty Books: Multimedia Journalism & Health Communication

### March 2

Jennifer Cox, Communication, is author of *Feature Writing and Reporting: Journalism in the Digital Age*. The award-winning author illustrates the fundamentals of feature writing and reporting while emphasizing the skills and tools needed to be successful in the digital era.

Vinita Agarwal, Communication, is author of *Medical Humanism, Chronic Illness and the Body in Pain: An Ecology of Wholeness*. This book proposes an ecological model of wholeness, which envisions wholeness in the dialogic engagement of the philosophical orientations of the biomedical and traditional medical systems.

## Fulton Faculty Books: African American & Korean Diaspora

### April 6

Aston Gonzalez, History, is author of *Visualizing Equality: African American Rights and Visual Culture in the Nineteenth Century*. The book discusses the fight for racial equality in the 19th century, which played out not only in marches and political conventions but also in the print and visual culture created and disseminated throughout the U.S. by African Americans.

EJ Han, Communication, is co-editor of *Korean Diaspora Across the World: Homeland in History, Memory, Imagination, Media and Reality*. This volume analyzes the Korean diaspora across the world and traces the meaning and the performance of homeland. The book is winner of the National Communication Association's Asian Pacific American Communication Studies Division 2020 Outstanding Book Award.

## Fulton Faculty Grant-Supported Service

### May 4

Yuki Okubo and Michèle Schlehofer, Psychology, discuss the American Psychological Association grant they earned to develop an Accelerated Mentoring Program, a comprehensive professional development program for racial minority students majoring in psychology, some of whom join the presentation.

Timothy Stock, Philosophy, and Michèle Schlehofer, Psychology, earned a National Endowment for the Humanities Grant to create the Re-envisioning Ethics Access and Community Humanities (REACH) Initiative: Integrating Community and Curricular Ethics, which focuses on ethics, ethics literacy and ethics agency through new curricular and co-curricular resources, connecting with the community.

Join this group of professional women from SU and the greater Salisbury community who meet monthly for networking and professional development.

## First Fridays • 8-9 a.m.

To register visit:

[www.salisbury.edu/p2p](https://www.salisbury.edu/p2p) or email: [Peer2Peer@salisbury.edu](mailto:Peer2Peer@salisbury.edu)

## The Financial Health & Mindset of the American

### February 5

With JaNean Stubbs-Taylor, commercial banking specialist, CEO of J.S. Taylor Consulting, LLC, and author of *The Nine Fruits of Finance, Does Money Really Grow on Trees and Entrepreneurs of Excellence*.

## Stepping into What's Next: Successfully Navigating Transitions

### March 5

With Mary Angela Baker, principal of Firm Fortitude.

## Taking an Idea to the Next Level

### April 2

With Louise L. Anderson, SU Music faculty and remote teaching specialist.

## Difficult Conversations at Work & in Life

### May 7

With Kathy Kiernan, principal/founder of Open to the Possible Coaching and Consulting.

## Harnessing the Power of Talking to Yourself

### June 4

With Lori DeWitt, SU Communication chair and Faith Filled Women founder.

## Journeys

### July 2

With Lawanda Dockins-Mills, retired SU associate dean of students, Guerrieri Student Union director, Town-Gown Council vice chair, Neighborhood Relations Committee co-chair and Neighborhood Compact Committee chair.

## Fulton Faculty Award Winners: Teaching & Civic Engagement

### February 2



Rachel Steele, Psychology, teaches a wide range of courses, including Psychology of Prejudice that she adapted for the Clarke Honors College. In her courses, she actively discusses racism and innovates her curriculum to connect current events with course concepts and theories.



Andrew Sharma, Communication, earned the U.S. Department of State U.S. India Educational Foundation grant to create civic engagement documentary films in India and the U.S., which allows audience members to participate and experience via multimedia tools and place-based (local) education.

# African American History Month

Visit [www.salisbury.edu/events](http://www.salisbury.edu/events) as the dates approach for event details.

## Civic Reflection Dialogue: The Black Family

Tuesday, February 2

3:30-4:30 p.m. • Via Zoom

Sign Up: <http://bit.ly/crfeb2021>

SU's Center for Civic Reflection facilitators use a reading, image or object to engage audiences in deep, productive conversation about issues related to African American families and communities. This is an opportunity to discover resources that deepen connections well beyond campus.

Co-sponsored with PACE – see page 7 for more information about this and other PACE events.



Photo by Unseen Histories on Unsplash

## Inaugural Anti-Racism Summit

Friday, February 5

1-5 p.m. • Via Zoom

Open to SU Faculty, Staff & Students Only

SU strives to be a leader in addressing structural oppression and institutional racism in many organizations and communities. The summit is part of a broader institutional effort to be intentional about talking about racism and its effects on SU and organizational systems in general; teaching concepts and solutions for positive social change that address institutional, structural and interpersonal racism; and doing the necessary and difficult work personally and collectively to improve race relations at SU and in our various communities. The summit includes guest presenters, panel discussions, topical sessions, student spoken word, and campus updates on diversity and inclusion efforts. The summit is virtual with optional and limited in-person attendance complying with physical and social distancing guidelines for live stream viewing and discussion.

Sponsored by Academic Affairs, Office of Diversity and Inclusion, Office of the President and Student Affairs.



## Visualizing Equality: Black Activist Families in Philadelphia

Monday, February 8

7-8:30 p.m. • Via Zoom

Aston Gonzalez, History, presents a lecture about free black Philadelphians who strengthened their activism through ties of family, friendship and their calls for justice before the Civil War.

Sponsored by the Fulton Public Humanities Program.

## The Protest ... Now What? Panel Discussion

Wednesday, February 17

6-7:30 p.m. • Via Zoom

Join an interactive panel discussion that gives an account of how one black family from Maryland's Eastern Shore turned their grief and loss into a local movement for police accountability throughout the state.

Sponsored by Multicultural Student Services.

## Celebrating Women's Voices: Reading by Afro-Colombian Poets Series

Friday, February 19

6 p.m. • Via Zoom

This first part of a two-event series highlights poetry produced by Colombian women poets to celebrate African American History Month and explores a broader Black identity in the Americas. The second event continues to highlight these voices during Women's History Month (see page 12). The poets perform in Spanish from Colombia in traditional dress accompanied by traditional music, and Roanoke College and SU students read the English translations by SU's Sally Perret and Roanoke's Jose Banuelos Monte. Featured poets include Mary Grueso Romero, Mirian Diaz Perez, Lucrecia Panchano, Lorena Torres Herrera, María Elcina Valencia Cordoba and Dionicia Moreno Aguirre.

## African American Poetry Read-In

Wednesday, February 24

6-7:30 p.m. • Via Zoom

The National African American Read-In is the nation's first and oldest event dedicated to diversity in literature. It was established in 1990 by the Black Caucus of the National Council of Teachers of English. Attendees are invited to read their own original poems or a poem from one of the books available from the SU Libraries.

Sponsored by SU Libraries, the Seidel School of Education and the Department of English.



## The Hate U Give Book & Film Discussion

Thursday, February 25

6-7:30 p.m. • Via Zoom

The award-winning young adult novel and film *The Hate U Give* by Angie Thomas tells the story of Starr Carter, a high school student caught between conflicting worlds: her Black neighborhood and the elite, mostly white environment of her private prep school. As she navigates these spaces, she confronts the realities of racism, police violence and tensions in becoming a community activist. A limited number of books are available for free to students, faculty and staff who would like to participate in the discussion. Participants may read the book or watch the film to join in on a virtual, small-group, facilitated discussion.

Sponsored by the Fulton Public Humanities Program.

# PRESTO

PRESTO offers learners of all ages individual and some small group lessons in piano, strings, voice, guitar, percussion, theatre, and some wind and brass instruments. Instructors work closely with SU Music and Theatre program faculty and students. Lessons are taught by professionals – either faculty or vetted regional musicians – or by trained and gifted SU student instructors, selected by faculty advisors to whom they may consult concerning pedagogy or repertoire.

## Session Starts Monday, February 8

Runs 12 weeks, ending week of May 3-7, with 1 week open for makeup lessons and recital prep.

## Virtual Recital: Week of May 17

For information on specific offerings & pricing, visit: [www.salisbury.edu/presto](http://www.salisbury.edu/presto)



# School of Social Work

SU's School of Social Work presents several events supporting their theme for 2020-2021: #SU Social Work Votes. SU also celebrates Social Work Month in March.

Follow the School of Social Work on social media:

- [www.facebook.com/SUSocialWork](https://www.facebook.com/SUSocialWork)
- [www.twitter.com/hashtag/SUSocialWork?src=hashtag\\_click](https://www.twitter.com/hashtag/SUSocialWork?src=hashtag_click)
- [www.instagram.com/explore/locations/1019033372/salisbury-university-school-of-social-work](https://www.instagram.com/explore/locations/1019033372/salisbury-university-school-of-social-work)
- [vm.tiktok.com/ZMJmTEUHC](https://vm.tiktok.com/ZMJmTEUHC)

Visit [www.salisbury.edu/events](http://www.salisbury.edu/events) as the dates approach for event details to register for Zoom events.



## Licensure Prep Night Wednesday, February 10 5 p.m.

For M.S.W. students on the Salisbury campus and satellite locations

## Saturday, February 13 9 a.m.

For M.S.W. students in the online option or part of the University of Maryland Global Campus partnership

## Lunch & Learn: Civic Reflection Dialogue with PACE & the Center for Civic Reflection Friday, February 19 • Noon

## National Association of Social Workers Maryland Advocacy Day Date TBA

## Social Work Interview Night with Career Services Wednesday, March 3 7-8 p.m.

## Lunch & Learn: Civic Reflection Dialogue with PACE & the Center for Civic Reflection Friday, March 19 • Noon

## Social Workers Across the Globe Tuesday, March 23 11 a.m.

Unique social work positions speakers panel.

## Games & Fun Throughout March Look for additional celebrations of Social Work Month.

## LinkedIn Night with Career Services Tuesday, April 13 • 5-6 p.m.

## Lunch & Learn: Civic Reflection Dialogue with PACE & the Center for Civic Reflection Friday, April 16 • Noon

## Explore Research Projects that Move the Profession Forward Friday, April 23 • Noon



#SU SocialWorkVotes  
SALISBURY UNIVERSITY

# Creative Writing Reading Series

## All readings are at 8 p.m.

For more information contact the English Department: 410-543-6445.

Visit [www.salisbury.edu/events](http://www.salisbury.edu/events) as the date approaches for details to register for the Zoom events.

## Kathryn Merwin Wednesday, February 17



Merwin is a writer from Washington, D.C. Her work has appeared in *Hayden's Ferry*, *Puerto del Sol*, *The Journal*, *New Ohio Review* and *Blackbird*, among others. She holds an M.F.A. from Western Washington University and has read and/or reviewed for *Bellingham Review*, *Adroit Journal* and *Poetry Northwest*. Her first collection, *Womanskin*, is now available from CutBank Books.

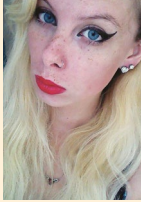


## Creative Writing Faculty Wednesday, March 10

Ryan Habermeyer, John A. Nieves, Christine Spillson and John Wenke read from their creative work and take questions about their own writing and publishing and about SU's creative writing track.

# History Department

## Charlotte Covey Wednesday, April 7



Hailing from St. Mary's County, MD, Covey earned her bachelor's in English - creative writing and psychology from Salisbury University in 2016, and she earned her M.F.A. in poetry from the University of Missouri - St. Louis in 2018. She has poetry published or forthcoming in journals such as *The Normal School*, *Salamander Review*, *CALYX Journal*, *the minnesota review*, *Potomac Review* and *Puerto del Sol*, among others. She is currently a contributing editor for River Styx.

## RIVER STYX 101



## Scarab Launch Wednesday, April 28

Students read selections from their work in the 2021 edition of *Scarab*, Salisbury University's in-house literary journal.

Visit [www.salisbury.edu/events](http://www.salisbury.edu/events) as the date approaches for details to register for the Zoom events.

## Chivalry & Antemurale Rhetoric as a Response to Ottoman Expansion in Europe

Thursday, February 25  
5:30 p.m.

Emir Filipović, University of Sarajevo, explores the role of chivalry, frontiers and borders in the history of Ottoman expansion in South-East Europe. Particular focus is placed on the development of a frontier discourse and identity. The strategic position of South-Eastern Europe – located between the great civilizational spheres of East and West, Islam, and Christianity – are presented as the setting for chivalry and antemurale rhetoric.

With support from Fulton Public Humanities.

## Race & Religion from Senegal to Spain

Wednesday, April 28  
4 p.m.

This symposium brings together historians of the western Islamic world with keynote presentations on intellectual exchanges in Andalucía around the year 1400 and in the Sahara around the year 1800. This broad region may seem disconnected, marginal to the core of today's moral, geopolitical and group contests. Nothing could be further from the truth. These overlooked origins of modernity lie at the heart of the crises of migration, belief and resource extraction defining the 21st century. The symposium features speakers Mohamad Ballan, Stony Brook University, and David Owen, Harvard University, with SU History Department discussants Joseph Venosa and Belen Vicens.

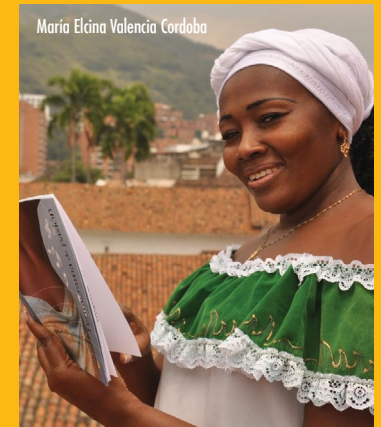
With support from Fulton Public Humanities.

# Women's History Month

## Celebrating Women's Voices: Reading by Afro-Colombian Poets Series

Wednesday, March 31  
6 p.m. • Via Zoom

The second of a two-event series highlights poetry produced by Colombian women poets to celebrate Women's History Month (the first event celebrates African American History Month – see page 10). The poets perform in Spanish from Colombia in traditional dress accompanied by traditional music, and Roanoke College and SU students read the English translations by SU's Sally Perret and Roanoke's Jose Banuelos Monte. Featured poets include Mary Grueso Romero, Mirian Diaz Perez, Lucrecia Panchano, Lorena Torres Herrera, María Elcina Valencia Cordoba and Dionicia Moreno Aguirre.



## Susan B. Anthony Museum & House Virtual Tour

Thursday, April 22  
2 p.m. • Via Zoom

A limited number of invitations are available. To register and receive an invite code for this event email [pafilutze@salisbury.edu](mailto:pafilutze@salisbury.edu).

Celebrate women's history with a live virtual tour of Susan B. Anthony's historic home in Rochester, NY. This hour-long program features Susan B. Anthony's life and work, focusing on her formative years, relationships, conflicts and tactics. Also take a virtual tour of the house as participants consider the question: "Does her history matter, and if so why?"

Sponsored by the Fulton Public Humanities Committee.



# Seidel School/ CHHS

## Inaugural Justice & Equity Virtual Forum

**Friday, April 2 • 6 p.m.**

For more information and to register contact Brian Flores at [bmflores@salisbury.edu](mailto:bmflores@salisbury.edu) or Aaron Willis at [acwillis@salisbury.edu](mailto:acwillis@salisbury.edu).

This forum invites Eastern Shore community members, including Salisbury University, and University of Maryland Eastern Shore faculty and students, to discussions about their research, teaching, community and campus initiatives focused on issues of power, justice and equity in our work and our world. Attendees engage in round table conversations for presenters, participants and community leaders to meet and collaborate across schools, disciplines, campuses and the larger Eastern Shore community.

Sponsored by the Seidel School of Education and College of Health and Human Services Diversity Interest Group.



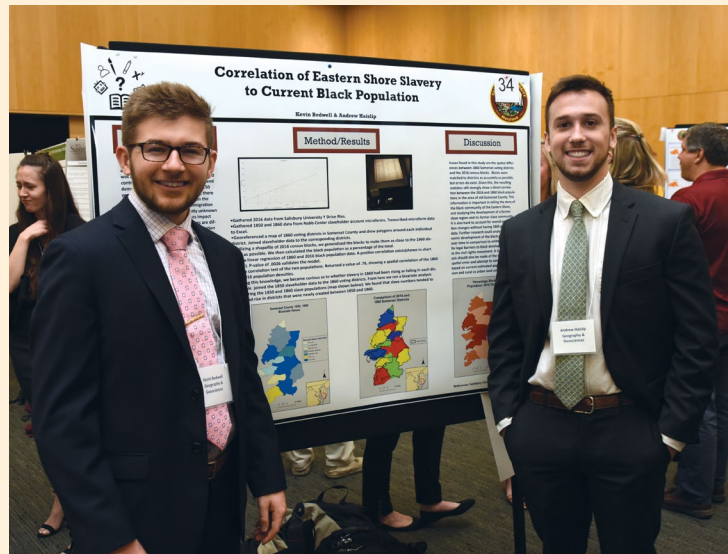
# 41st Annual Philosophy Symposium

## Ethics Mega-Bowl

**Saturday, April 10 • 2-5 p.m.**

Visit [www.salisbury.edu/events](http://www.salisbury.edu/events) as the date approaches for details to register for the Zoom events.

The Philosophy Department sponsors its annual Philosophy Symposium with an ethics extravaganza! Throughout the spring semester, teams made up of philosophy faculty and students research a set of Intercollegiate Ethics Bowl cases, for example, gene editing and prison voting rights. Alumni and campus and community members are invited to participate in the debate after the teams have made a presentation and to help score the winning team. The event focuses on student research and scholarship in ethics, as well as the spirit of lively philosophical discussion.



# Office of Undergraduate Research & Creative Activity

## SU Student Research Conference

**Friday, April 23 • 12:30-7:30 p.m.**

For more information visit [www.salisbury.edu/susrc](http://www.salisbury.edu/susrc)

This event showcases student research and creative activities conducted across campus as oral presentations, panel discussions and a poster session. Those interested in research and creative activity are strongly encouraged to attend.

# Multicultural Festival Returns

**Spring Date TBA  
11 a.m.-3 p.m.**

Multicultural Student Services again hosts its annual Multicultural Festival featuring multicultural food and entertainment.



# Maryland Holocaust Educators Network

**An Interdisciplinary  
Inquiry on the Holocaust,  
Human Rights & Social  
Justice**

**July 18-23**

Free; includes books, materials & most meals

In-person or virtual, depending on safety regulations

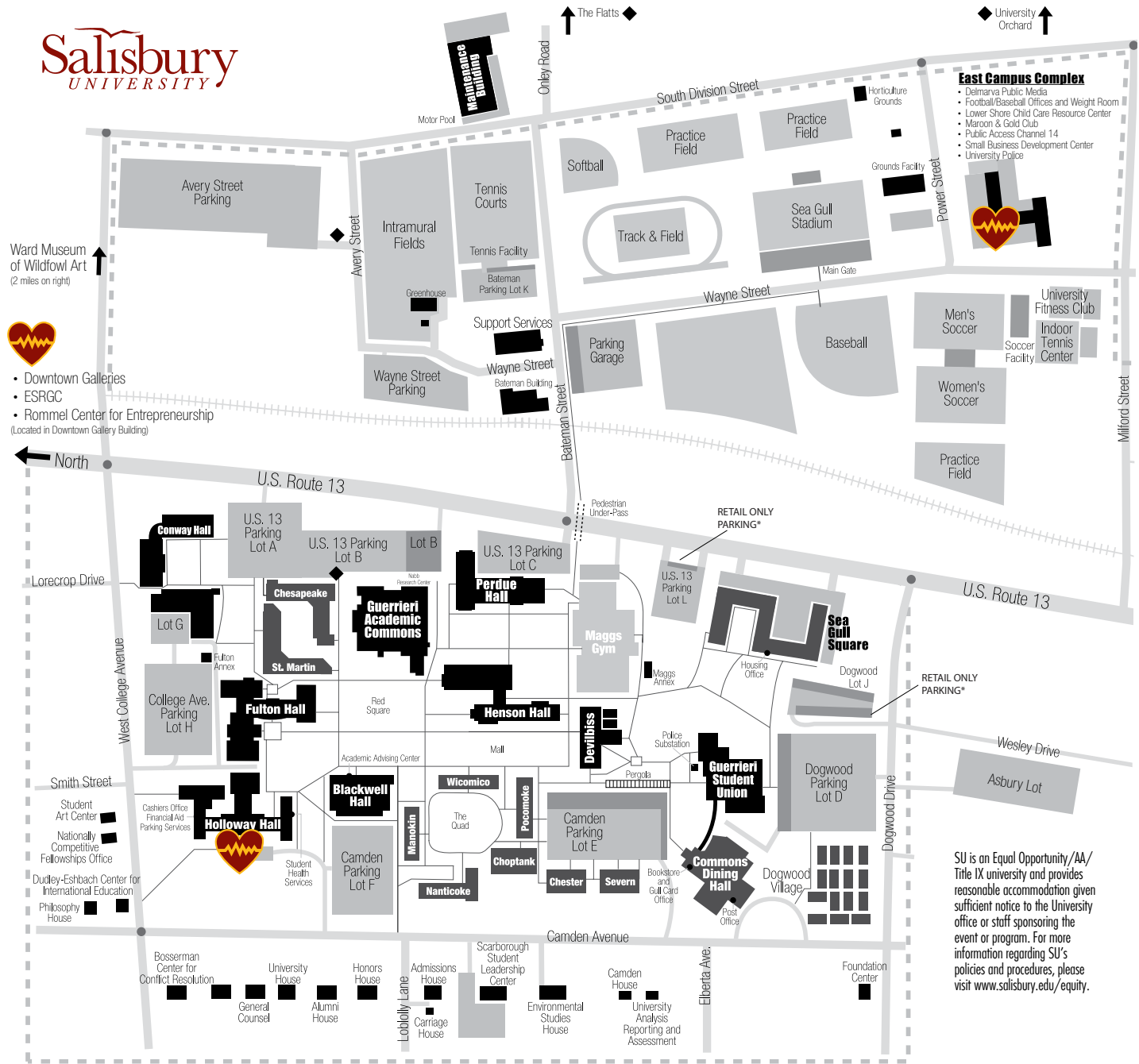
For more information and to register: [bit.ly/MDHEN](http://bit.ly/MDHEN)

Join classroom and community educators from across the Mid-Atlantic to study the Holocaust and genocide in the context of civil rights and social justice. Field trips and multimedia sessions explore the significance of past events to the present.

Sponsored by the Olga Lengyel Institute for Holocaust Studies and Human Rights.



# COVID-19 SCREENING LOCATIONS



Ward Museum of Wildfowl Art (2 miles on right)



- Downtown Galleries
- ESRGC
- Rommel Center for Entrepreneurship (Located in Downtown Gallery Building)

## East Campus Complex

- Delmarva Public Media
- Football/Baseball Offices and Weight Room
- Lower Shore Child Care Resource Center
- Maroon & Gold Club
- Public Access Channel 14
- Small Business Development Center
- University Police



SU is an Equal Opportunity/AA/ Title IX university and provides reasonable accommodation given sufficient notice to the University office or staff sponsoring the event or program. For more information regarding SU's policies and procedures, please visit [www.salisbury.edu/equity](http://www.salisbury.edu/equity).

## SELF-SCREENING

- Available only to the campus community
- Visitors must use the on-site locations listed below for screening and to receive a visitors badge

## ON-SITE SCREENING

- Holloway Hall Main Entrance**  
 Weekdays - 8 a.m.-4:30 p.m.
- SU Police Department, East Campus Complex, Power Street**  
 All Other Times  
 (walk-up, ring buzzer at door)

## BE PREPARED

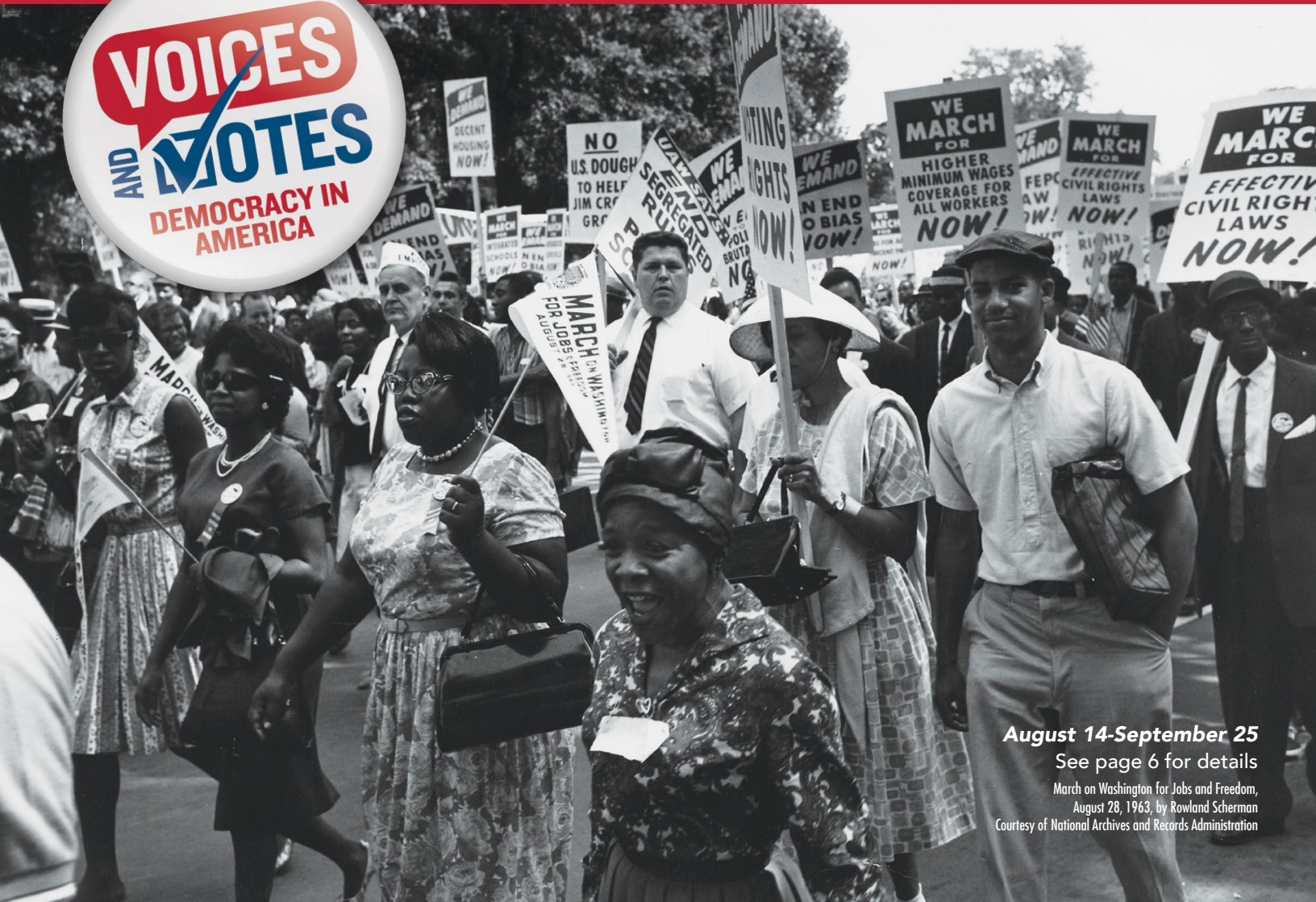
- Have your ID ready
  - Campus members: SU ID
  - Visitors: Photo ID
- Wear your face covering
- Your temperature will be screened
- Answer a list of screening questions
  - Screening questions can be found here: [www.salisbury.edu/COVIDquestions](http://www.salisbury.edu/COVIDquestions)
  - If you answer "YES" to any questions, you will not be allowed on campus.

Would you like to support events like these, or other priorities including scholarships?



Become a part of The Campaign for Salisbury University as we fund the resources needed for the extraordinary people – students, faculty, staff and others – who are woven into the fabric of our campus. Together, We Are SU.

Events are subject to change;  
for updates and corrections, visit:  
[www.salisbury.edu/events](http://www.salisbury.edu/events)



**August 14-September 25**  
See page 6 for details

March on Washington for Jobs and Freedom,  
August 28, 1963, by Rowland Scherman  
Courtesy of National Archives and Records Administration