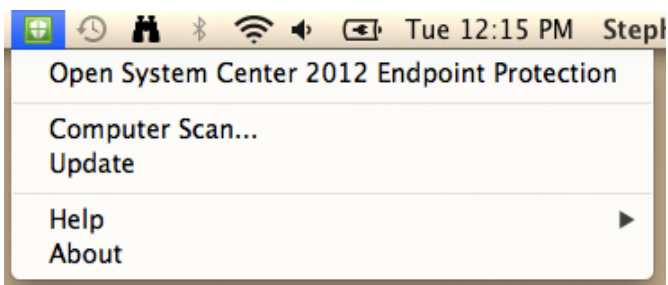



Using Microsoft System Center 2012 Endpoint Protection for Macintosh

This guide covers how to use Microsoft System Center 2012 Endpoint Protection for Macintosh to protect your computer against viruses and malware.

HOW DO I TELL IF I HAVE FOREFRONT INSTALLED?

The Microsoft System Center 2012 Endpoint Protection icon will appear in your menu bar in the upper right corner of your screen.

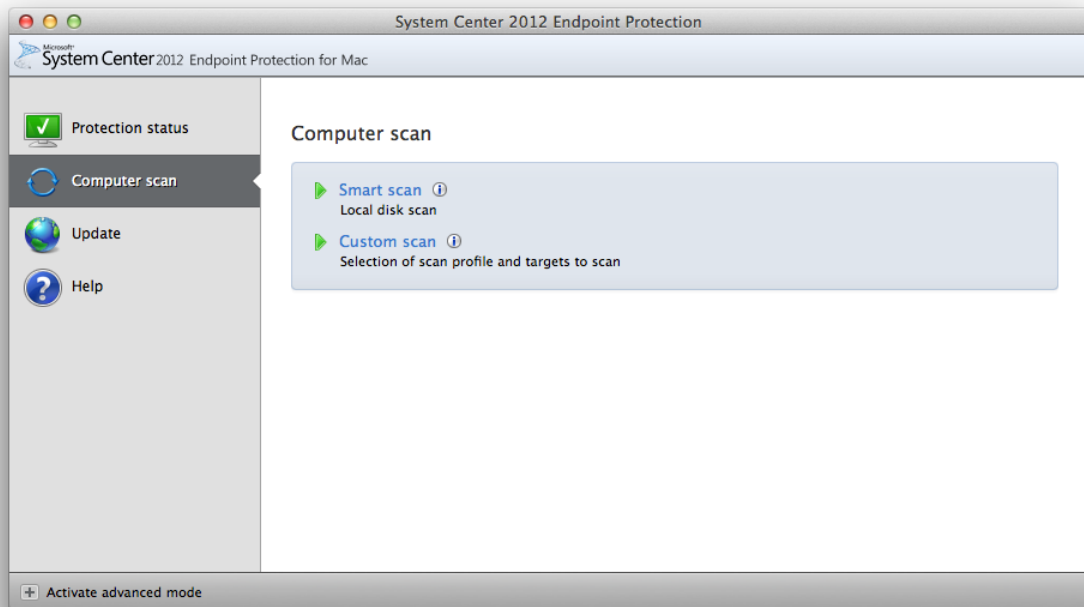


The icon is a white shield on a green, yellow or red background, such as: . Click the icon to give you the drop down menu, which has the option to Open System Center 2012 Endpoint Protection.



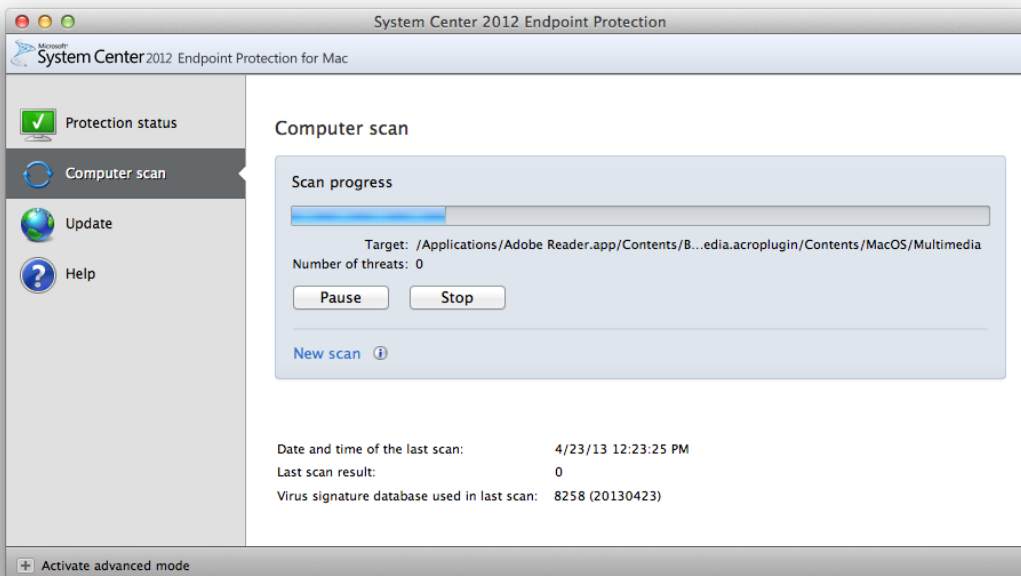
HOW DO I SCAN MY COMPUTER?

Open System Center 2012 Endpoint Protection for Mac, and in the Computer Scan section, select Smart scan or Custom scan.



- Smart scan scans your hard drive and local disks
- Custom allows you to specify what areas to scan.

System Center 2012 Endpoint Protection will appear as follows while scanning:

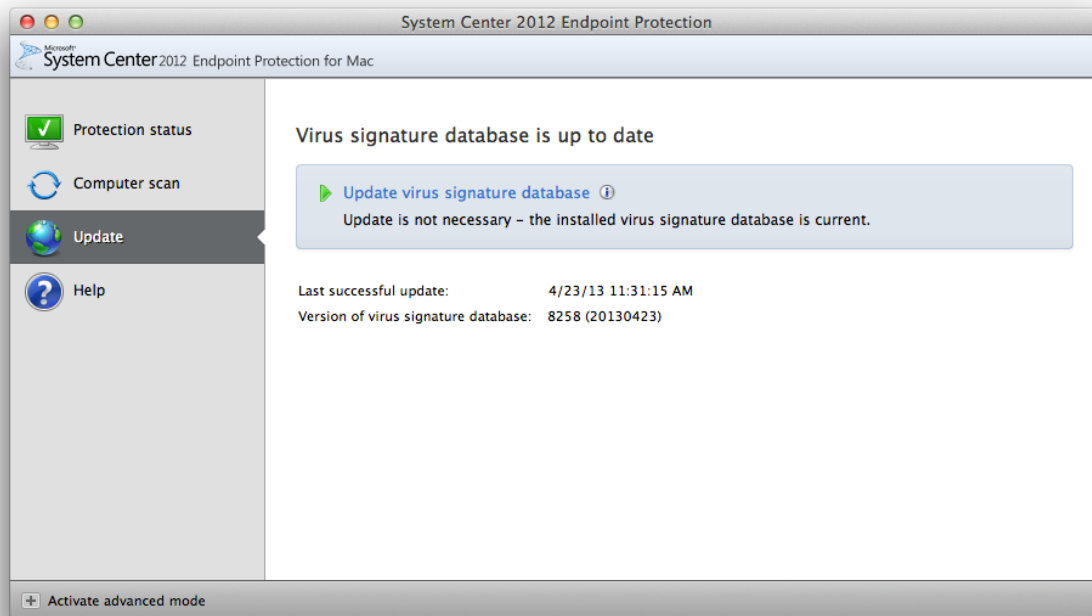


Once complete, Forefront will display a summary of the scan.

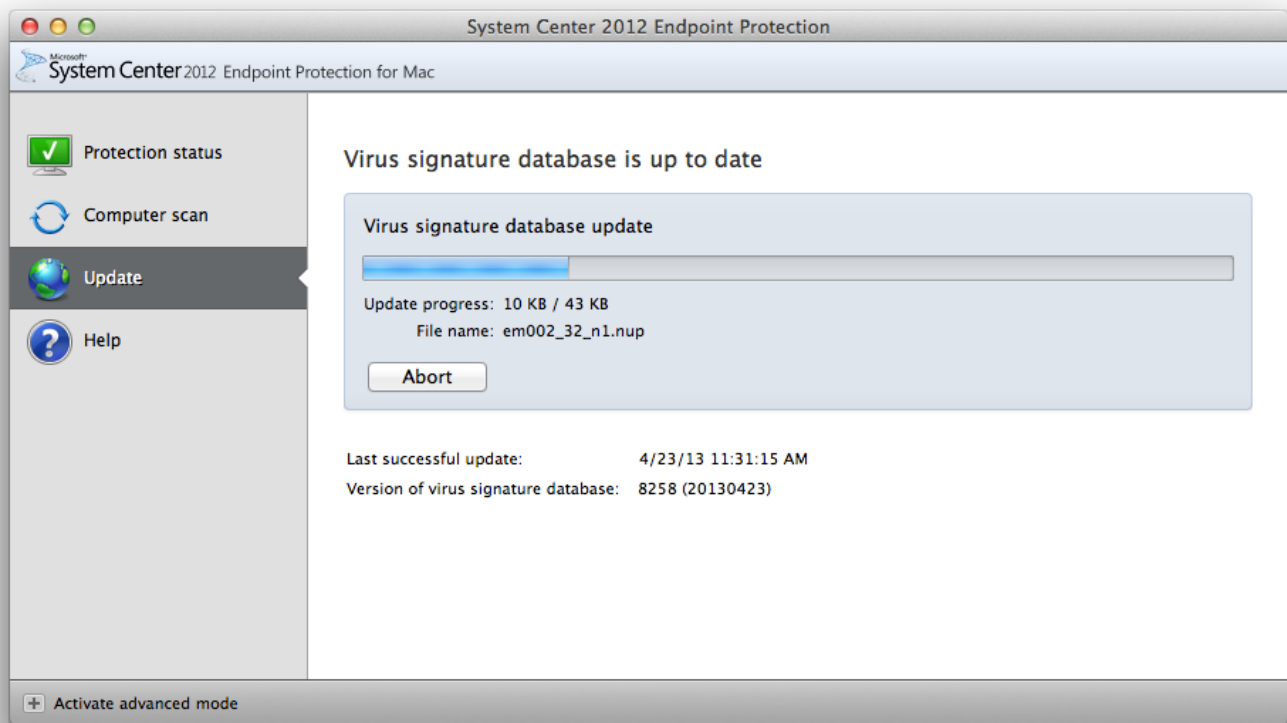


HOW DO I UPDATE MY VIRUS AND SPYWARE DEFINITIONS

Information Technology manages the virus and spyware updates to regularly update your virus protection with the latest definitions. If you want to manually update your definitions, you can do so by clicking the Update tab, and then clicking Update.



Forefront will check for new virus updates, and download and install them for you.



It will return to the update status page when complete.