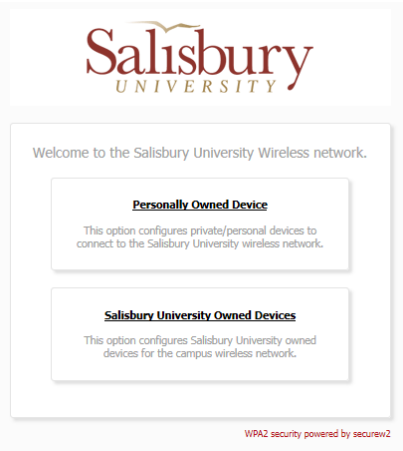


Configure Your Computer or Mobile Device to Connect to SU's Wireless Network

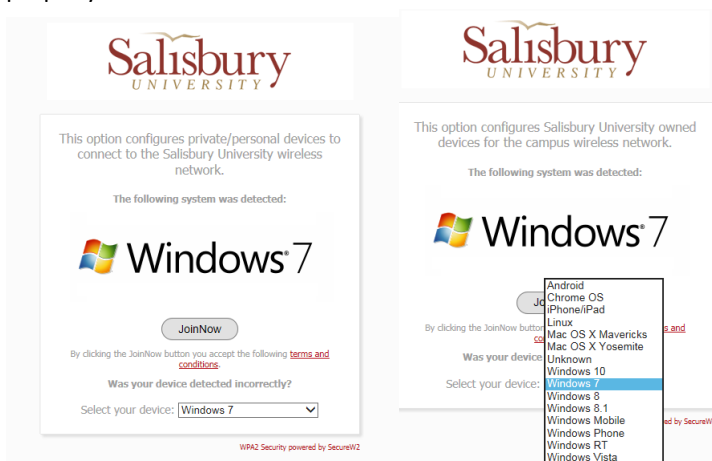
This guide will assist you in configuring your computer or device to connect to SU's wireless network using SU-Connect. Keep in mind that the directions may vary slightly depending on the device/computer and web browser you are using.

INSTRUCTIONS

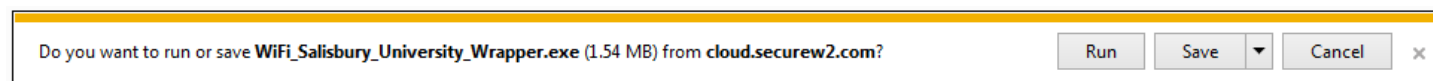
- To begin the configuration process, select SU-Connect from the list of available networks in your device's Wi-Fi settings to connect to the **SU-Connect** wireless network. Then, open any web browser and navigate to <http://connect.salisbury.edu> if it does not automatically open that page.
- Click **Personally Owned Device** or **Salisbury University Owned Devices**.



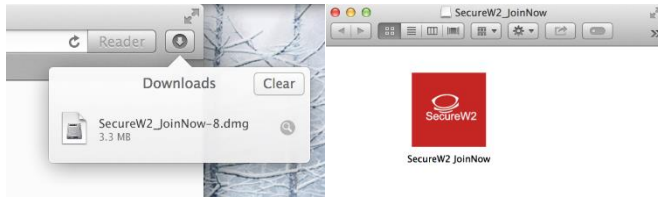
- Click the **JoinNow** button. NOTE: Next to **Select your device**, you can click the arrow to select your device, if it does not properly detect it.



- If you receive the message shown below, click **Run** to run **WiFi_Salisbury_University_Wrapper.exe**.



- If you are using a Mac, go to your **Downloads** and double-click **SecureW2-JoinNow.dmg** and then double-click the **SecureW2 JoinNow** application to open.



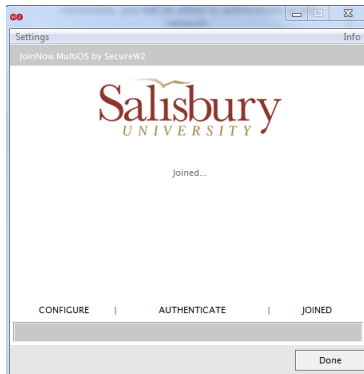
- Click **Yes** to allow **SecureW2 JoinNow** to make changes to your computer.



- Now enter your Salisbury Username and Password and click **Next**.



- If your password is up-to-date and your account is active, this process will complete and you will need to click **Done**.



- You can see that you are now connected to **SU-Secure** by clicking the **Network** icon.

