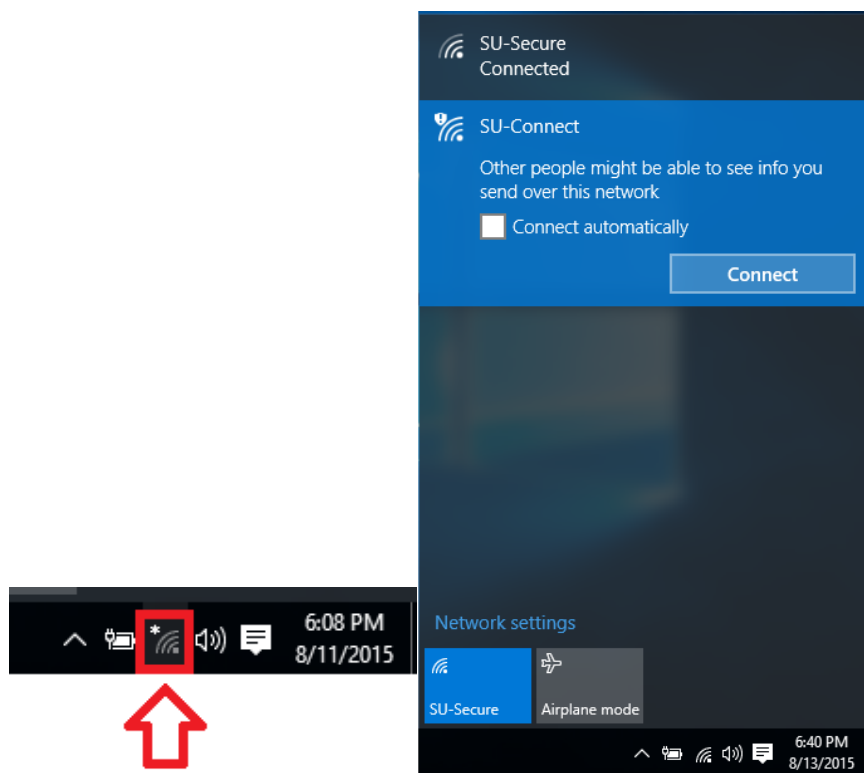


**CONNECTING TO THE SALISBURY UNIVERSITY WIRELESS NETWORK**

This document will give you instructions on how to connect your Windows 10 Computer to our wireless network with the SU-Connect automated system. If that system does not work for your setup, follow the instructions on how to connect directly to SU-Secure, and then try the manual setup if that does not work.

## AUTOMATED SYSTEM INSTRUCTIONS

Click the **Network** Icon in the bottom right-hand corner, near the date and time, and select **SU-Connect** and click **Connect**.



Open a web browser, such as **Internet Explorer**, and navigate to <http://connect.salisbury.edu>.



Click **Personally Owned Device** or **Salisbury University Owned Devices**.



Welcome to the Salisbury University Wireless network.

**Personally Owned Device**

This option configures private/personal devices to connect to the Salisbury University wireless network.

**Salisbury University Owned Devices**

This option configures Salisbury University owned devices for the campus wireless network.

WPA2 security powered by securew2

Click the **JoinNow** button.



This option configures private/personal devices to connect to the Salisbury University wireless network.

The following system was detected:



JoinNow

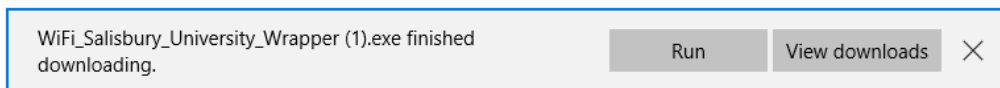
By clicking the JoinNow button you accept the following [terms and conditions](#).

Was your device detected incorrectly?

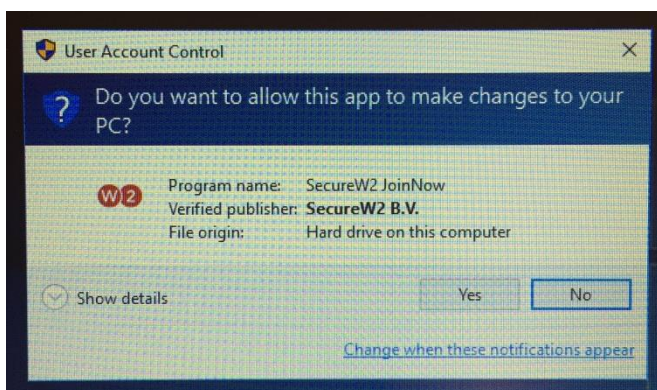
Select your device:

WPA2 Security powered by SecureW2

Click **Run** to run **WiFi\_Salisbury\_University\_Wrapper.exe**.



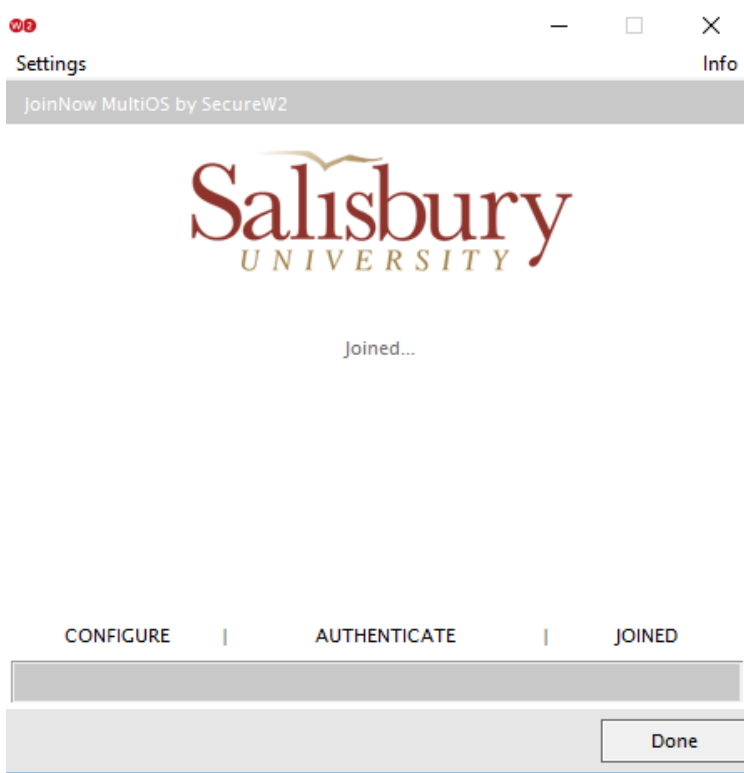
Click **Yes** to allow **SecureW2 JoinNow** to make changes to your computer.



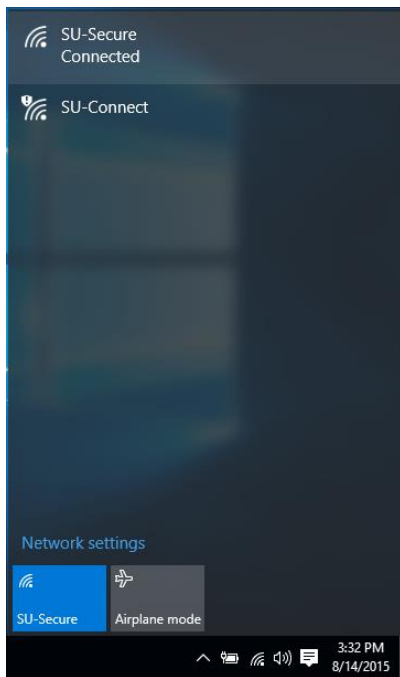
Now enter your Salisbury Username and Password and click **Next**.



If your password and up-to-date and your account is active, this process will complete and you will need to click **Done**.



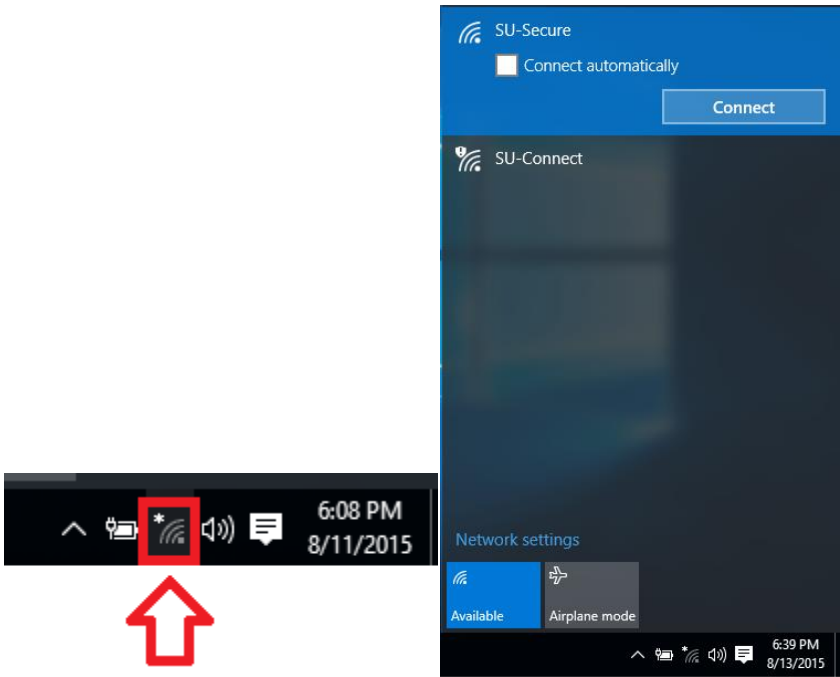
You can see that you are now connected to **SU-Secure** by clicking the **Network** icon.



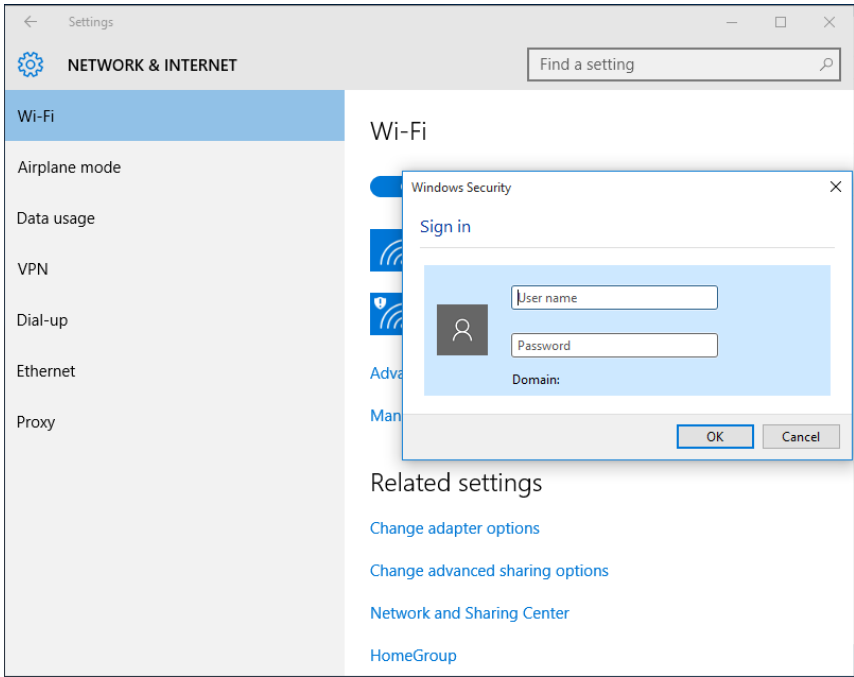
## DIRECT CONNECTION

If the automated process does not work on your computer, here are the instructions on how to connect directly to SU-Secure.

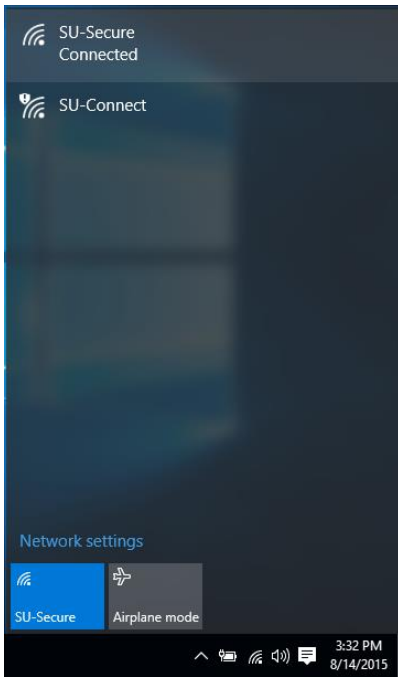
Click the **Network** icon and select **SU-Secure** and click **Connect**.



Enter your Salisbury University Username and Password and click **OK**.



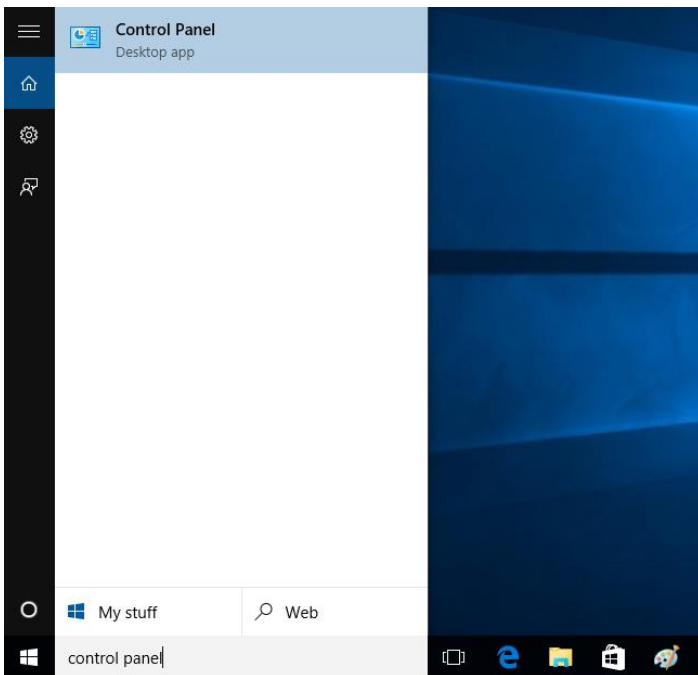
You can see that you are now connected to **SU-Secure** by clicking the **Network** icon.



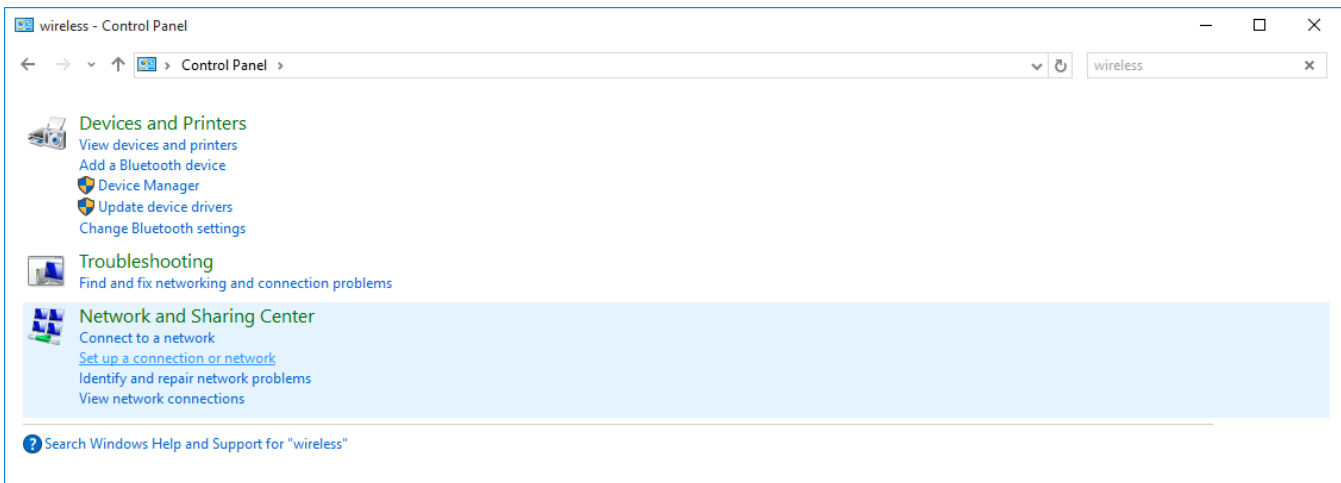
## MANUALLY CONNECT

If connecting directly to SU-Secure does not work on your computer, here are the instructions on how to manually connect to SU-Secure.

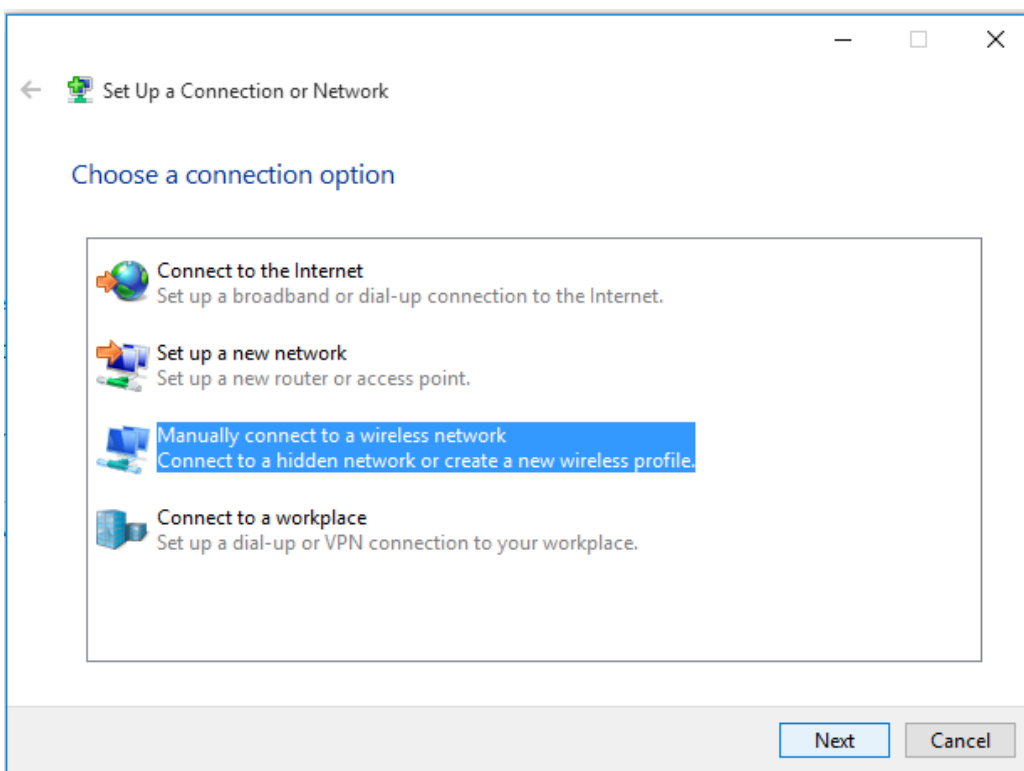
Click the search box in the bottom left-hand corner, search for and select **Control Panel**.



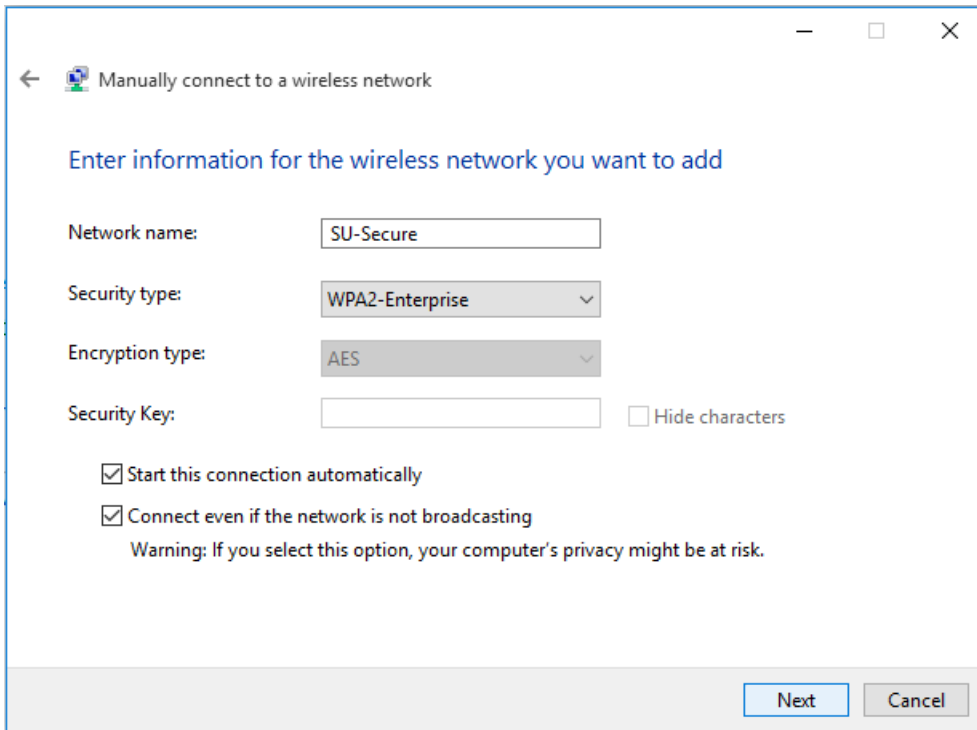
In **Control Panel**, type **wireless** in the search box in the top right corner. The window below will display matches to the search. Select **Set up a connection or network** under **Network and Sharing Center**.



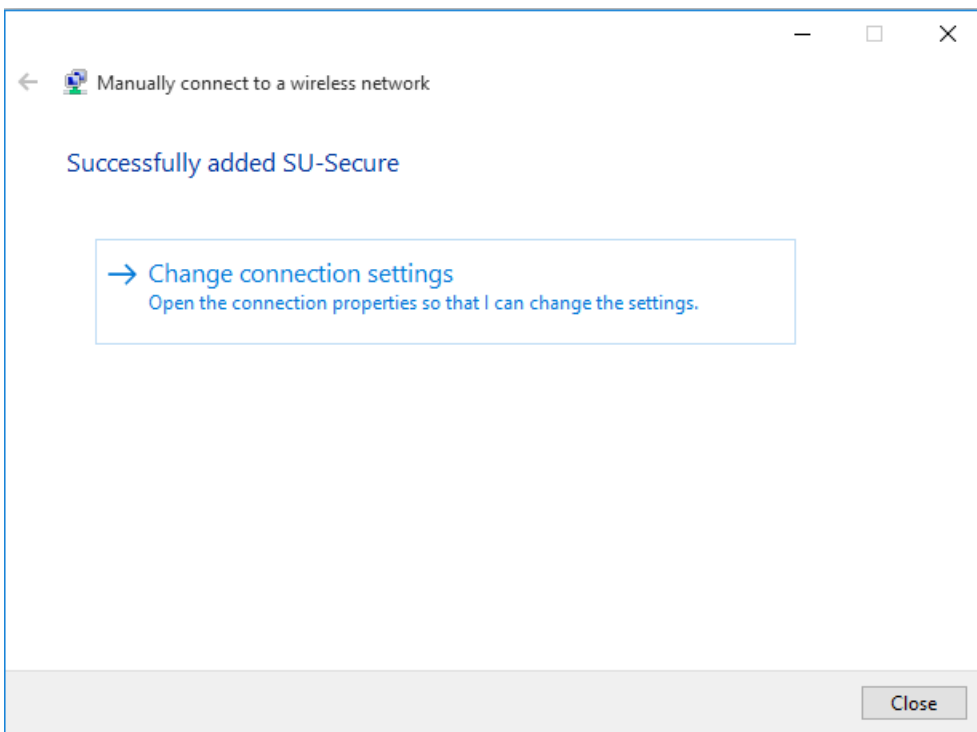
Select **Manually connect to a wireless network** and click **Next**.



In the **Manually connect to a wireless network** window, for **Network Name** enter **SU-Secure**. For **Security type**, select **WPA2-Enterprise** from the drop-down. For **Encryption Type**, make sure **AES** is selected from the drop-down. Make sure that both **Start this connection automatically** and **Connect even if the network is not broadcasting** are checked. Then click **Next**.

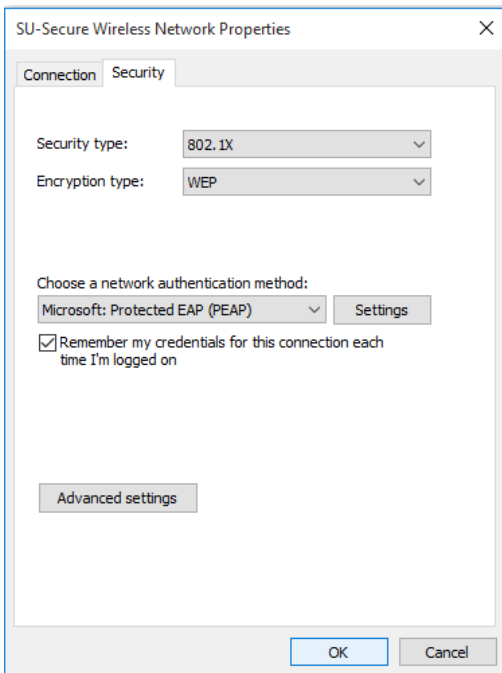


The window will change to indicate you have **Successfully added SU-Secure**. Click **Change connection settings**.



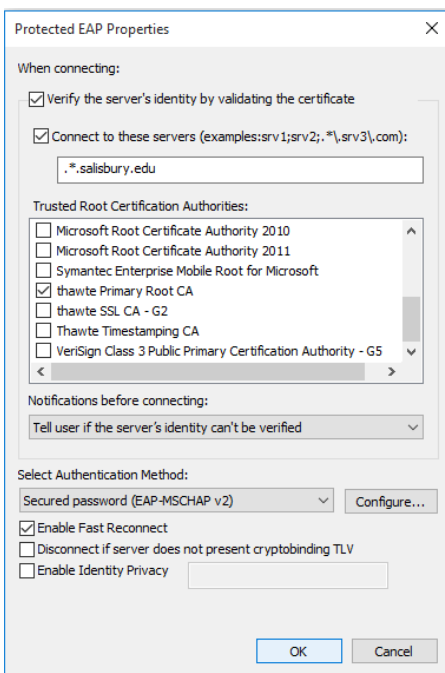
In the **SU-Secure Wireless Network Properties** window, click the **Security** tab. In **Choose a network authentication method**, **Microsoft: Protected EAP (PEAP)** should be selected. Click the **Settings** button.



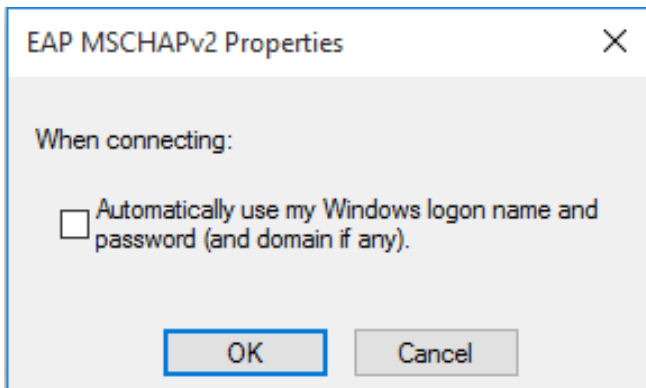


In the **Protected EAP Properties** window, make sure that **Validate server certificate** is checked. Check **Connect to these servers:** and type **.\*.salisbury.edu** (period + asterisk + period + salisbury + period + edu) in the box provided. In **Trusted Root Certification Authorities**, check **thawte Primary Root CA**.

In **Select Authentication Method**, verify that **Secured password (EAP-MSCHAP v2)** is selected and click **Configure**.

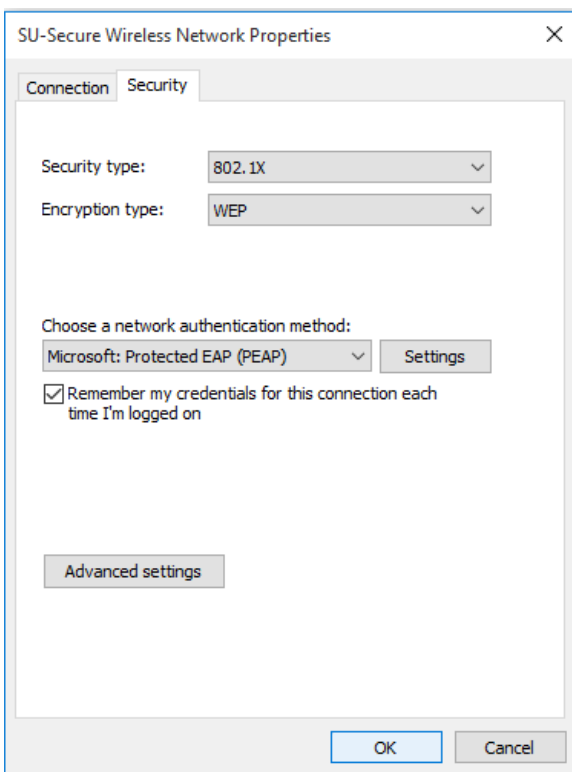


In the **EAP MSCHAPv2 Properties** window, uncheck **Automatically use my Windows logon name and password (and domain if any)**. Click **OK**.

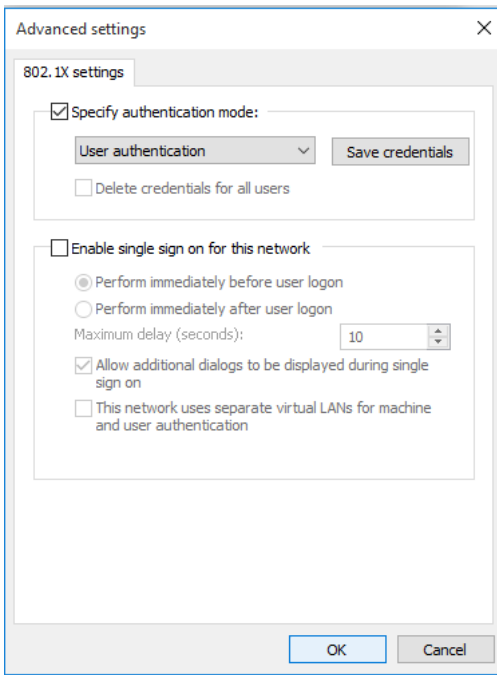


Click **OK** to exit the **Protected EAP Properties** window.

In the **SU-Secure Wireless Network Properties** window, under the **Security** tab, click the **Advanced settings** button.

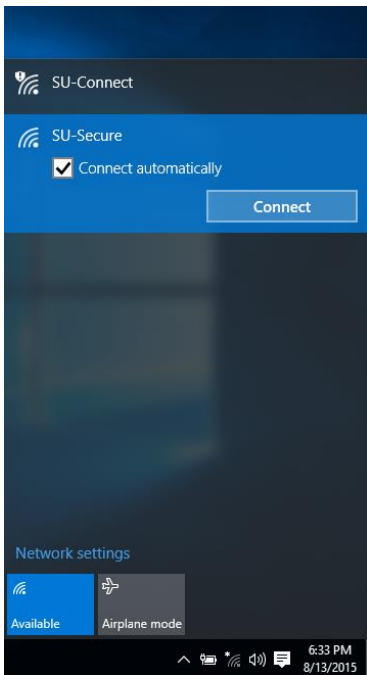


Click the **802.1x settings** tab. Make sure that **Specify authentication mode** is checked, and select **User authentication** from the dropdown menu. Click **OK** to close the **Advanced settings** window.

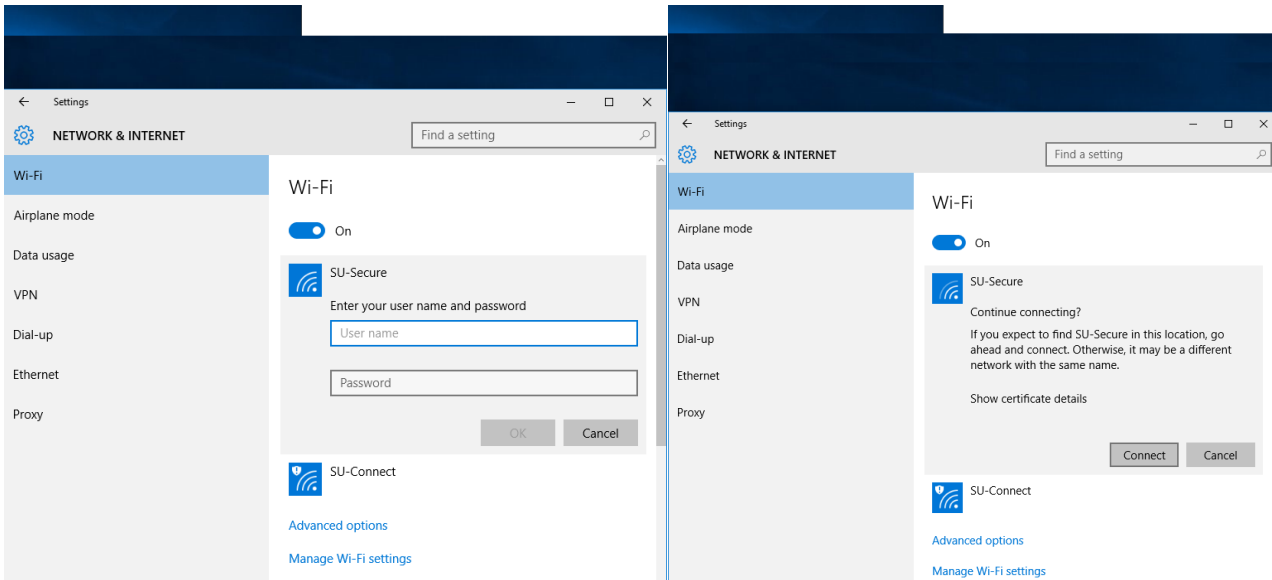


Click **OK** to exit the **SU-Secure Wireless Network Properties** window. Click **Close** on the **Manually Connect to a Wireless Network** window. Exit out of the **Control Panel** window as well.

Click the **Network** icon and select **SU-Secure** and click **Connect**.



Enter your Salisbury University Username and Password in the click **OK** and then **Connect**.



You can see that you are now connected to **SU-Secure** by clicking the **Network** icon.

