

PANORAMA

A Cultural Events Publication
of Salisbury University
FALL 2018



Scanning the Pharaohs

Explore the royal mummies of the 18th-20th dynasties
p. 21



Salisbury Pops

The annual winter
music festival returns
p. 21



50 Finest Decoy Makers Before 1950

The Ward Museum
commemorates the 50th
anniversary of the Ward
Foundation • p. 10

Over Here & Over There

The Nabb Center commemorates
the 100th anniversary of the
end of World War I • p. 4



welcome

A Message from the President

As I begin my first semester as Salisbury University's president, I'm excited to explore the cultural landscape that we support. I am impressed with the active roster of events we host as well as the broad variety of guests we regularly welcome to campus. With performers and exhibits spanning the globe, SU is helping expand the horizons for not only our students but our community.



It may just be a coincidence, but as a chemist leading a liberal arts institution, I think it is only appropriate that the first cultural series of my presidency illuminates "The Intersection of Arts and Sciences." From peeking into the pyramids and under the mummies' wraps to enjoying the other-worldly music of the theremin, the series

finds the crossroads between scientific discovery and entertainment.

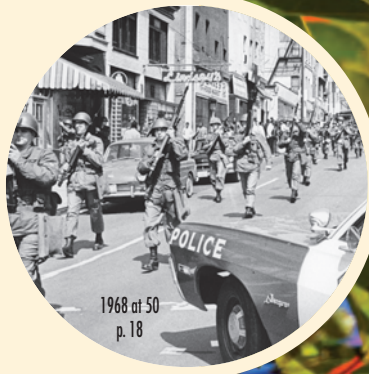
This fall also brings the return of masters of modern dance Ailey II and musical genre benders Bumper Jacksons. They join Peruvian brass band La Patronal – a highlight of SU's Hispanic Heritage Month events – and a myriad of other performers on SU's stages. There are several lectures and discussions featuring our talented faculty and their guests, ranging from artists talks, to the Adventures in Ideas seminars, to the new Philosophy Saturdays series.

I'm looking forward to exploring SU's downtown Salisbury connections, including our SU Art Galleries. I also can't wait to see our students shine as part of the Music, Theatre and Dance Department's concerts and performances. Through our Ward Museum of Wildfowl Art and Nabb Research Center for Delmarva History and Culture, I'll be able to become better acquainted with the rich history and traditions of this wonderful region I now call home. I'll also take some time to explore my new campus, as this national arboretum provides natural beauty around every corner.

I hope, like me, you'll use this issue of Panorama as your guidebook to the opportunities that await you at Salisbury University. I look forward to meeting you soon at one of our many events!

A handwritten signature in black ink, appearing to read "C. Wight". The signature is fluid and cursive.

Charles A. Wight
President, Salisbury University



FALL SEMESTER CULTURAL SERIES

Traditionally, the arts flourish in the realm of emotion, imagination and creativity. Science, on the other hand, is a matter of reason, accuracy and methodical process. Both science and art are human attempts to understand and describe the world around us. Collaboration between the arts and sciences has the potential to create new knowledge and ideas beneficial to all, and when intersecting, they open up new ways of seeing, experiencing and interpreting the world around us.

We begin our exploration with a series of screenings that highlight that intersection. *Arts & the Mind* reveals the powerful, positive impact of the arts on the human brain. *The Origami Revolution* shows how the centuries-old tradition of folding two-dimensional paper into three-dimensional shapes is inspiring a scientific revolution. The dramatic story of artist *John James Audubon: Drawn From Nature* provides a clear window into how people regarded nature.

NOVA: The Origami Revolution
p. 14



The series also features Rob Schwimmer, one of the top theremin virtuosos in the world, who performs on the only musical instrument that is not touched to play. Two lectures about Egypt's pyramids and mummies explain how modern science helps reveal a wealth of information about these archeological treasures.

Hispanic Heritage Month features Peruvian La Patronal, whose music is rooted in the tradition of "fiestas populares"; a screening of *Dolores* – the story of Dolores Huerta, one of America's most important, yet least known activists; and direct from Cádiz, Spain, critically acclaimed flamenco dancer Eduardo Guerrero and his elite company of dancers round out the festival.



La Patronal • p. 8

Other offerings include a performance by the universally renowned Alvin Ailey American Dance Theater, jazz singer René Marie brings her "Experiment in Truth" and the Bumper Jacksons paint America's story from the streets of New Orleans to Appalachian hollers. Back by popular demand, The Peacherine Ragtime Society Orchestra performs a Halloween-themed "Spooky Silents" show, and the Jackson Chamber Music Series presents the elegant harpist Melissa Tardiff Dvorak and flutist Julianna Nickel. Join us for meditation classes and so much more.

Panorama Continues to Evolve!

Salisbury University's cultural events scene is bursting at the seams – and we want to help you find out what is happening. To make it even easier, in addition to our calendar format, you can now find a listing of all events by organizer with a contact phone number. Turn to pages 23-24 for this handy guide.

Almost Everything Is Free: SU is proud that most of our cultural offerings are free and open to the public. For events where a large audience is anticipated, attendees may be asked to pick up a free ticket in advance to ensure their seat, look for the **A** symbol. For those events that do require an admission, look for the **\$** symbol and turn to pages 25-26 for ticket information.



Winter Wonderland • p. 22

All the Details: Looking for locations, contact phone numbers, websites or admission costs? You'll find it all in one place. Turn to pages 23-26 and find this information organized by event sponsor.

Cultural Series Contact: If you see this symbol at the end of the event description **☘**, that means the event is sponsored by the Cultural Affairs Office and you can get more information on these events by calling **410-543-6271**.

Events Can Change: As always, everything is subject to change. Visit the SU website for the press releases that include details about the event and the latest time, date and location information: www.salisbury.edu.



Joan Gaither, Documentary
Story Quilter • p. 10

august

ONGOING

Delmarva: People, Place & Time
Guerrieri Academic Commons,
Niemann Gallery
Open During GAC Hours
NABB CENTER EXHIBIT: This self-guided exhibit highlights various aspects of Delmarva history, including Native Americans and early settlers, agriculture and water, and an early 19th century home. Updated with new materials and objects for the fall 2018 semester!



THROUGH AUGUST 19

50 Years of Art, Nature & Tradition: Ward Foundation Retrospective
Ward Museum,
Welcome Gallery

WARD MUSEUM EXHIBIT: The Ward Foundation celebrates its 50th anniversary in 2018. Established in 1968 to honor the legacy of Lem and Steve Ward, the foundation has grown to be a leader in the arts and cultural community of Maryland and beyond. This exhibit showcases the history of the foundation, its leaders, and its impact on the community and beyond. \$



THROUGH SEPTEMBER 23

Through Artist Eyes: The Eastern Shore Revealed
Ward Museum

WARD MUSEUM EXHIBIT: Artists from across the Eastern Shore exhibit works that explore the area's natural and working landscapes, rich urban and rural lifeways, and the beauty of the everyday living in this special region. Works from a variety of media, including painting, photography, wood, stone and metal, reveal the artistic vision and talents of those making art reflective of the Eastern Shore. \$



THROUGH OCTOBER 25

Timothy Nohe: Voltage Is Signal
Conway Hall, Electronic
Gallery

Artist Talk: Thurs., Oct. 25, Conway Hall 317, 5:30 p.m.
SU ART GALLERIES EXHIBIT: Nohe's work forges a generational link between media artists arising from the DIY analog community and the hacker culture of circuits and software today. Both communities were built on open source concepts and hands-on approaches to problem-solving and distribution, in and out of galleries and situational spaces.

1-31

Locals Free Admission
Ward Museum

Value Carpet One, a Ward Museum Corporate Sponsor, sponsors free admissions throughout the month for local museum guests, including residents of Wicomico, Worcester, Somerset, Dorchester, Talbot, Sussex and Accomack counties.



20 MONDAY THROUGH OCTOBER 27

Remake/Remodel

Fulton Hall, University Gallery

Heather Harvey Artist Talk & Reception: Thurs., Sept. 27, 5:30 p.m.

SU ART GALLERIES EXHIBIT: Heather Harvey and Aurora Robson both make art out of waste. Harvey collects trash on daily walks and uses these discarded materials to form poetic, thought-provoking installations that reimagine personal memories and explore how objects carry meaning. Robson creates colorful, biomorphic sculptures and installation environments out of recycled plastic debris. Both artists draw attention to vital environmental and philosophical issues while suggesting that rethinking, remaking and remodeling our relationship to the world around us holds the power to shift perspectives and create change.

23 THURSDAY

Lighthouse Literary Guild: Poetry Reading with James Arthur
Blackwell Hall, 4:30-6 p.m.

CELL EVENT: Arthur is an assistant professor of poetry at Johns Hopkins University. The public is invited to share poems at the gathering.

RSVP required: www.salisbury.edu/cell

23-24

Lighthouse Literary Guild: Poetry Writing Retreat with James Arthur

Blackwell Hall, 9 a.m.-4 p.m.

CELL EVENT: Arthur is an assistant professor of poetry at Johns Hopkins University. Cost includes continental breakfast and lunch. \$



**24 FRIDAY
THROUGH FEBRUARY 17**

**A Century of Conservation:
The 1918 North American
Migratory Bird Treaty**

Reception: Fri., Aug. 24,
4-6 p.m.

Ward Museum,
Welcome Gallery

WARD MUSEUM EXHIBIT: As part of the 50th anniversary of the Ward Foundation, the Ward Museum celebrates the centennial of the 1918 Migratory Bird Treaty Act and its transformative relationship with the Chesapeake Bay through an exhibit focused on the landmark legislation. Uncover the local impact of the 1918 Migratory Bird Treaty Act through a wide array of antique decoys, sporting accessories and conservation ephemera. \$



**27 MONDAY
SELECT MONDAYS THROUGH
DECEMBER 10**

Immigration, Migration & Displacement
Conway Hall 153, 6-7:30 p.m.

PACE IDIS 280 LECTURE SERIES: The weekly series on the causes and consequences of human movement provides an overview of key topics affecting migratory populations (i.e., refugees, asylees, migrants and immigrants). SU faculty examine human movement through a multiplicity of lenses, investigating the socio-political, historical, environmental, linguistic, economic, psychological and security factors affecting refugees, immigrants and displaced persons. The first class features a faculty panel sharing their area of expertise and discussing disciplinary approaches to terminology used throughout the course. See individual class titles throughout the calendar.

Although attending every lecture is optional, each stands on its own. Also available as a one-credit pass/fail course with no prerequisites, community members may sign up for IDIS 280.



Institute for
Public Affairs and Civic Engagement

**27 MONDAY
THROUGH DECEMBER 19**

**Traveling Through Special
Collections: Vignettes of
Voyages & Travel**

Guerrieri Academic Commons,
1st Floor Lobby
Open During GAC Hours
Reception: Thurs., Sept. 13,
6-7 p.m.

SU LIBRARIES EXHIBIT: Voyage with travelers of the past through vignettes of the special collections at the Nabb Research Center. Diaries, photographs, letters, drawings and ephemera tell the fascinating stories of people from across the world throughout time. These unique historical documents demonstrate the common reasons for traveling, as well as the advances in transportation technology over the past 200 years. See related workshop on Sat., Nov. 3.



**27 MONDAY
THROUGH DECEMBER 19**

**Over Here & Over There: The World at War,
1914-1918**

Guerrieri Academic Commons,
Thompson Gallery
Mon.-Fri. 10 a.m.-4 p.m., Sat. 10 a.m.-2 p.m.
Reception: Thur., Sept. 20, 6-7 p.m.

NABB CENTER EXHIBIT: To commemorate the 100th anniversary of the end of the First World War, the Nabb Research Center highlights certain aspects of the war, including humanitarian efforts, the role of women and African Americans, local troops, propaganda, leisure and entertainment, and the lasting effects that soldiers endured. Archival materials and objects from the Nabb Research Center's collection supplement and enhance the history of the Great War. See related performance on Thur., Oct. 18.

september

4 TUESDAY EVERY TUESDAY

eBird Tuesdays

Ward Museum, 9-10 a.m.

WARD MUSEUM EVENT: See beautiful birds and contribute to citizen science at the same time. Meet-up with the Ward Museum's education staff for birding around Schumaker Pond each week and reporting our finds. It's a perfect opportunity for the birding-curious.



4 TUESDAY

Institute for Retired Persons First Meeting

MAC Center (909 Progress Circle, Salisbury), 2 p.m.

IRP MEETING: The Institute for Retired Persons (IRP) of SU is an organization for seniors (over 50) to engage in learning activities. Members can also join sponsored clubs, such as bridge, touring, book, bicycle and walking. Meetings are held 2 p.m. Tuesdays throughout the semester.

Visit www.salisbury.edu/irp for more information and meeting details.



5 WEDNESDAY

Creative Writing Festival Featuring Christine Spillson

Perdue Hall 156, 8 p.m.



WRITERS ON THE SHORE: Acclaimed essayist Spillson is a recent graduate of the nonfiction M.F.A. at

George Mason University and teaches at SU. Her work has appeared in journals such as *Boulevard*, *Portland Review*, *Diagram*, *The Rumpus* and *Revider* and has been reprinted by *Longreads*. In addition, ten SU creative writing students briefly read from their work.

7 FRIDAY THROUGH NOVEMBER 10

Hyphenative

Downtown Gallery

Reception: Fri., Sept. 7, 5-8 p.m.

Édouard Duval-Carrié Artist

Talk: Thurs., Sept. 13

(See Sept. 13 for details.)

SU ART GALLERIES EXHIBIT:

Familiar folk traditions offer comfort in the turbulent present, reminding us of a

simpler time that provides an anchor to cultural identity. However, the great migrations that have marked the modern world have disrupted the connection of identity to place and have created many hyphenated and hybrid cultures. The artists in this exhibition use mythic histories, reimagined folk traditions and cultural appropriation to embody what is particularly contemporary in our diasporic world.



10 MONDAY

Rosh Hashanah Dinner

Commons, Bistro,
4:30-7:30 p.m.

INTERNATIONAL DINNER SERIES: Please note: Salisbury University does not have a kosher kitchen. ✪ \$

10 MONDAY

Migrations, Borders & Images of Citizenship: A Socio-Historical Perspective

Conway Hall 153, 6-7:30 p.m.

PACE IDIS 280 LECTURE SERIES: Featuring Farzad Karimzad and Shawn McEntee. See Aug. 27 for series details.

10 MONDAY

Time Scanners: Machu Picchu

Holloway Hall, Great Hall,
7 p.m.

FILM: See page 8 for details.

10 MONDAY

Lighthouse Literary Guild: Poetry Writing with Nancy Mitchell

Blackwell Hall, 6-7:30 p.m.

CELL CLASS: Six-week poetry writing class with Pushcart Prize-winning poet. \$

10 MONDAY MONDAYS THROUGH DECEMBER 10

PRESTO Lessons

Locations & Times
with Registration

CELL CLASS: Individual music, voice and theatre lessons for all ages. \$

For classes, costs and registration:
www.salisbury.edu/cell



11 TUESDAY TUESDAYS THROUGH OCTOBER 16

Lighthouse Literary Guild: Appreciating Poetry with Nancy Mitchell

Blackwell Hall, 6-7:30 p.m.

CELL CLASS: This six-week class focuses on strategies to read, analyze and enjoy poetry. \$

12 WEDNESDAY

Hispanic Heritage Dinner

Commons, Bistro,
4:30-7:30 p.m.

INTERNATIONAL DINNER
SERIES: 🍷💰

12 WEDNESDAY

La Patronal

Holloway Hall Auditorium,
7 p.m.

CONCERT: See page 8 for
details. 🍷

13 THURSDAY

Artist Édouard Duval-Carrié

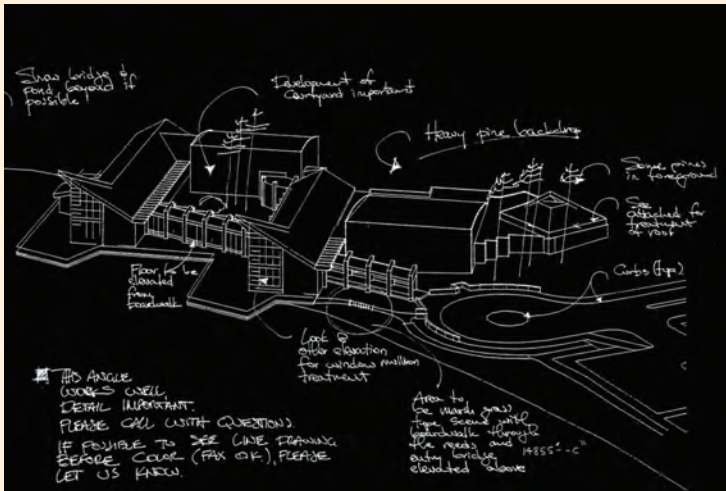
Perdue Hall 156, 6 p.m.

SU ART GALLERIES
ARTIST TALK: Duval-
Carrié is a Haitian-born
artist who emigrated to
Puerto Rico during the
Duvalier Regime before
attending the Université
de Montréal and McGill
University in Canada
and graduating from
Loyola College,
Montréal. He later



attended the École Nationale Supérieure des Beaux-Arts in
Paris, France. He resided in France for many years and currently
lives in Miami, FL. His work is influenced by Haitian culture and
history and captures an idea of the "Nation," often through
political and religious themes. See Sept. 7 for exhibit details.

Co-sponsored with the Modern Languages and Intercultural Studies Department.



13 THURSDAY

Grandpa, Redheads & the X-Factor: The Story Behind the Design of the Ward Museum of Wildfowl Art

Ward Museum, 5 p.m.

WARD MUSEUM LECTURE: From 50 years of the Ward Foundation come many stories. Join Michael Wigley, architect of the Ward Museum on Schumaker Pond, for an enlightening look at the origins, history and continuing evolution of the Museum's unique and fascinating design.

13 THURSDAY THURSDAYS THROUGH OCTOBER 18

SU @ the Beach: Writing Your Memoir with Emily Rich

Ocean Pines Community
Center, 9-10:30 a.m.

CELL CLASS: Delmarva
Review's Rich teaches this six-
week class on developing the
craft of writing. 💰

13 THURSDAY THURSDAYS THROUGH OCTOBER 18

Lighthouse Literary Guild: Writing Your Novel or Memoir with Pat Valdata

Blackwell Hall, 6-8 p.m.

CELL CLASS: This six-week
course covers essential skills
to help writers who want to
produce a good novel or
memoir. 💰

14 FRIDAY

Feature Friday: Diana Wagner & Louise Anderson

The Brick Room, 116 N.
Division St., 6-7 pm.

CELL EVENT: 2 women, 7
instruments, 1 great night!
Must be 21+ to enter.



15 SATURDAY

What Do Magnets, Souls & Blood Have in Common? Early Greek Accounts of Nature

Conway Hall 152,
9:30-11.30 a.m.

PHILOSOPHY SATURDAYS:
Bringing together community
members, educators and
students, this family- and
child-friendly series of public
talks, discussions and
activities initiates
philosophical conversations
across generations. The first
featured speaker is Michael
Taber, St. Mary's College,
Department of Philosophy.

With support from the Whiting
Foundation and SU Philosophy
Department.

15 SATURDAY SATURDAYS THROUGH OCTOBER 20

SU @ the Beach: Write It Right with Susan Canfora

Ocean Pines Community
Center, 9-10:30 a.m.

CELL CLASS: Clear, concise
writing is essential in
conveying a message,
persuading a point of view or
presenting an idea.

september

17 MONDAY

Constitution Day Candidate Meet & Greet

Red Square, 11:30 a.m.-2 p.m.
PACE EVENT: Celebrate the ratification of the U.S. Constitution and cast your "Yea or Nay" vote on the 231-year-old document. Candidates running for local and state offices in the 2018 midterm elections will be on hand for an informal meet-and-greet. PACE will also assist students with voter registration and absentee ballot requests.

17 MONDAY MONDAYS THROUGH OCTOBER 15

Meditation Classes

Holloway Hall, Great Hall, 5 p.m.

CLASS: Led by Monika Lupean, explore several different types of meditation. Practicing meditation has been proven to help with relaxation, inner peace, stress reduction and fatigue. When combined with conventional medicine, meditation also can improve physical and mental health. ✪

17 MONDAY

PBS Screening: Dolores

Holloway Hall Auditorium, 7 p.m.

FILM & DISCUSSION: See page 8 for details. ✪

17 MONDAY

Immigration, Migration & Displacement Series Film

Holloway Hall Auditorium, 7 p.m.

PACE IDIS 280 LECTURE SERIES: SU's Cultural Affairs Office sponsors the screening and discussion of the film *Doloros*. See film details on page 8. See Aug. 27 for series details. ✪

19 WEDNESDAY

The Mathematics of Elections: Societal Preference Order

Conway Hall 152, 6 p.m.

PACE LECTURE: Jennifer Bergner of SU's Mathematics and Computer Science Department details how to aggregate a variety of individual preferences into a single candidate choice. Audience interaction allows for real-time review of what kind of candidate they might support.

19 WEDNESDAY

African American History on the Eastern Shore

Guerrieri Academic Commons, Assembly Hall, 7 p.m.



NABB CENTER LECTURE: Historian Clara Small presents her ongoing research on African Americans who

shaped the history of Delmarva.

19 WEDNESDAY

Allegheny Ensemble: Enigmatic Elgar

Holloway Hall, Great Hall, 7 p.m.

SU MUSIC CONCERT: Allegheny Ensemble is Sachiko Murasugi, violin, and Jeffrey Schoyen, cello, with guests, Ting-Lan Chen, violin, and Nathan Buckner, piano, performing Elgar's expansive and intriguing *Piano Quintet in A minor*. Also included is a Student Showcase, a chamber music performance by SU's outstanding string students.



20 THURSDAY

Discover SU: Campus Sculpture Tour

Blackwell Hall, 4:30-6 p.m.

CELL EVENT: Join Assistant Professor of Sculpture Bill Wolff for a tour of the many sculptures dotting the grounds and buildings of SU. From bronzes to student works, Wolff shares what's on display.

RSVP appreciated: www.salisbury.edu/cell



20 THURSDAY

Artist Adrian Waggoner

Conway Hall 153, 5:30 p.m.

SU ART GALLERIES ARTIST TALK: Waggoner is a figurative painter and conceptual artist. He paints his subjects as if they were religious icons lost in the modern world. His body of work consists of paintings, performance, objects and stories, which explore themes of myth, identity, masculinity and sexuality.

21 FRIDAY

SU on the Road: Maryland Historical Society & Museum

Baltimore, 8 a.m.-5:30 p.m.

CELL TRIP: Enjoy a guided one-hour highlights tour, then explore the galleries on your own. The remainder of the day is yours to enjoy in Baltimore. \$

21 FRIDAY

SU Research Day

Guerrieri Academic Commons, Assembly Hall, 1-5 p.m.

SPECIAL EVENT: Learn more about this annual celebration of faculty research as the date approaches: www.salisbury.edu/researchday

21 EVERY FRIDAY

SU @ the Beach:

Faculty Lecture Series

Ocean Pines Community Center, 3:30-5 p.m.

CELL LECTURE: Each week, faculty from SU heads to the beach to deliver an interactive, 90-minute lecture on a topic they're passionate about. \$

HISPANIC HERITAGE MONTH FESTIVAL

September 15-October 15

Honoring the generations of Hispanic and Latino Americans who have positively influenced and enriched our nation and society in the United States and to celebrating the group's heritage and culture.

10 SEPTEMBER MONDAY

Time Scanners: Machu Picchu
Holloway Hall, Great Hall,
7 p.m.



FILM: The dense jungle of the Peruvian Andes hides a sacred city – Machu Picchu, an enchanted 500-year-old stone citadel. One of the most inaccessible cities in the world, there's still much unknown about the city. Using 3D laser-scanning technology, structural engineer Steve Burrows leads his team of experts into the Peruvian jungle to scan the sacred Inca city, asking three main questions: How did the Inca build a city atop a mountain ridge? How were the terraces constructed? And how did they supply water to the city? 🌟



12 SEPTEMBER WEDNESDAY

Hispanic Heritage Dinner
Commons, Bistro,
4:30-7:30 p.m.
INTERNATIONAL DINNER
SERIES 🌟 💰



12 SEPTEMBER WEDNESDAY

La Patronal
Holloway Hall Auditorium, 7 p.m.

CONCERT: Rooted in the tradition of 'fiestas populares' or town fairs common in rural villages across Latin America, La Patronal honors these gatherings. La Patronal members are direct descendants of rural musicians from Peru and combine this knowledge of folk culture with their formal music studies. Their lively performances encourage audience participation and dancing with contagious percussion and vibrant brass and winds. La Patronal brings their performances to life through the incorporation of visual aspects of 'fiestas populares,' including masks and traditional dance. 🌟

This engagement is made possible through Southern Exposure: Performing Arts of Latin America, a program of Mid Atlantic Arts Foundation in partnership with the National Endowment for the Arts.

17 SEPTEMBER MONDAY

PBS Screening: Dolores
Holloway Hall Auditorium, 7 p.m.



FILM & DISCUSSION: An equal partner in co-founding the first farm workers unions with Cesar Chavez, Dolores Huerta's enormous contributions have gone largely unrecognized. One of the most defiant feminists of the 20th century, she continues the fight to this day, at 87. With intimate and unprecedented access to this intensely private mother to 11, the film reveals the raw, personal stakes involved in committing one's life to social change. Faculty members Tim Dunn (sociology), Corrine Pubil (modern languages), James Hatley (environmental studies/philosophy) and April Logan (English) lead a post-screening discussion. 🌟



Photo Credit: Beatrix Mexi Molnar

4 OCTOBER THURSDAY

Compañía Flamenca Eduardo Guerrero: Flamenco Pasion
Holloway Hall Auditorium, 7 p.m.

DANCE: Guerrero, critically acclaimed flamenco dancer and choreographer, uses his eclectic style, combining classical and contemporary Spanish dance, ballet and contortion to express the depth of passion and skill exhibited in the many styles of this beloved, Spanish art form. This group of elite artists captivates audiences as they convey all of the different feelings of this temperamental and passionate dance. 🌟



Photo Credit: Paco Lobato



Photo Credit: Marjon Broeks

september



22 SATURDAY

Artificial Intelligence in Science Fiction & Film: Pain & the Pathways to Personhood

Conway Hall 179, 10 a.m.-3 p.m.

ADVENTURES IN IDEAS: HUMANITIES SEMINAR: The HBO reboot of *Westworld* participates in a long literary and cinematic tradition (from *Frankenstein* to *Blade Runner 2049*) as it postulates a theory of consciousness and ponders the ethical implications of the creation of artificial intelligence. In particular, the series posits the centrality of suffering to the formation of individual identity, and challenges assumptions about personhood with regard to non-human minds of our own making. T. Ross Leasure (English) and Timothy Stock (Philosophy) examine the notion of consciousness-as-maze, mysterious and potentially perilous, and our continuing exploration of that concept through fiction and film (like Asimov's *Bicentennial Man* and Garland's *Ex Machina*) as human beings come ever closer to creating "thinking machines" constructed in their own image. \$

25 TUESDAY

SU on the Road: September in Solomons Island

Solomons Island, 10 a.m.-5 p.m.

CELL TRIP: Travel by boat from Tilghman Island to Solomons Island, learning about the lighthouses along our route. Solomons is a charming town on the Patuxent River, with shops, restaurants and the Calvert Maritime Museum. At the end of the day, we'll boat back to Tilghman Island. \$

25 TUESDAY

Why Yellow? Discovering the Lost History of the Jewish Identifier

Conway Hall 152, 3:30 p.m.

FULTON FACULTY COLLOQUIA: Presented by Leslie Yarmo, associate professor of theatre and dance.

25 TUESDAY

TUESDAYS THROUGH OCTOBER 9

SU @ the Beach: Digging into Ireland's Past: Archaeology & Early History with Beth Ragan

Ocean Pines Community Center, 1-2:30 p.m.

CELL CLASS: An exploration of the history of Ireland. \$

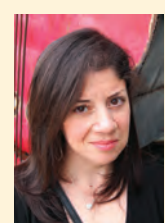
26 WEDNESDAY

Stephanie Kartalopoulos Reading

Commons, Montgomery Room, 8 p.m.

WRITERS ON THE SHORE:

Kartalopoulos earned her Ph.D. in English from the University of Missouri. Her poems recently appeared in and are forthcoming from journals that include *Comstock Review*, *Sou'wester*, *Laurel Review*, *Thrush Poetry Journal*, *Radar Poetry* and *Matter Monthly*. *AMULET* – her first poetry collection – was published by Saint Julian Press in May 2018.



22 SATURDAY

The Art of the Bird with Ellen Lawler: Part 1, Drawing

Ward Museum, 10 a.m.-4 p.m.

WARD MUSEUM CLASS: In celebration of the centennial and success of the 1918 Migratory Bird Treaty Act, delve into the artistic appreciation of our avian friends with a full-day drawing session with Lawler, noted local artist and professor emerita of biology. This workshop can be taken separately or in conjunction with part 2 in the series; see Sept. 29. \$

22 SATURDAY

SU @ the Beach: SU Sailing Club Regatta & Reception

Ocean Pines Yacht Club, 11 a.m.-1 p.m.

CELL EVENT: Watch the regatta and enjoy a reception with the members of the sailing club afterward.

Event is free, but RSVP is required: www.salisbury.edu/cell



24 MONDAY

Meditation Class

Holloway Hall, Great Hall, 5 p.m.

CLASS: See Sept. 17 for details. ⚡

24 MONDAY

Contemporary Global Forced Migration

Conway Hall 153, 6-7:30 p.m.

PACE IDIS 280 LECTURE SERIES: Featuring Shawn McEntee and Toran Hansen. See Aug. 27 for series details.



26 WEDNESDAY

New Discovery of the Pyramids with Yasser Elshayeb
Holloway Hall, Great Hall, 7 p.m.

INTERSECTION OF ART & SCIENCE LECTURE: Egypt's Great Pyramid of Giza contains a hidden void at least a hundred feet long. Despite being one of the oldest and largest monuments on Earth, there is no consensus about how it was built. To better understand its internal structure, the pyramid was imaged using muons, which are by-products of cosmic rays that are only partially absorbed by stone. These results constitute a breakthrough for the understanding of Khufu's Pyramid and its internal structure. These findings show how modern particle physics can shed new light on the world's archaeological heritage. ★

Sponsored by World Artists Experiences, Inc. and the Embassy of the Arab Republic of Egypt, Washington, D.C.



26 WEDNESDAY WEDNESDAYS THROUGH OCTOBER 10

**Lighthouse Literary Guild:
Submitting Written Pieces Online
with Tara Elliott**

Blackwell Hall, 4-5:30 p.m.

CELL CLASS: Learn the basics of submitting poetry, short stories and creative nonfiction to magazines and journals, including simultaneous submissions, first serial rights and knowing the correct formats. \$

28 FRIDAY

**SU @ the Beach:
Faculty Lecture Series**

Ocean Pines Community Center, 3:30-5 p.m.

CELL LECTURE: See Sept. 21 for details. \$



28 FRIDAY THROUGH FEBRUARY 17 50 Finest Decoy Makers Before 1950

WARD MUSEUM EXHIBIT: To commemorate the 50th anniversary of the Ward Foundation, the Ward Museum is holding an exhibit of 50 great decoy carvers and their works prior to 1950. The content of the exhibit is drawn from community nominations for both makers and their birds. It is the premier exhibit during the Ward Foundation 50th Anniversary event held during the Chesapeake Wildfowl Expo. \$



29 SATURDAY

**Joan Gaither: Documentary
Story Quilter**

Guerrieri Academic Commons,
Assembly Hall, 10 a.m.-Noon

NABB CENTER EVENT: Gaither, Baltimore native and former professor/chair of undergraduate art education at the Maryland Institute College of Art, shares her story of creating 242 quilts since 2000. She creates mixed-media quilts that share the stories of many people and places. As a fiber artist and documentary story quilter, her work centers on community collaborations and quilting workshops designed to encourage participants to research and celebrate their own personal histories and stories. She feels a sense of urgency and passion that drives her to capture the oral histories and memories from aging storytellers and preserve them in her quilts so they will live on.

Co-sponsored by the Fulton Public Humanities Committee.

29 SATURDAY

**SU @ the Beach:
Basics of Sailing**

Ocean Pines Yacht Club,
9 a.m.-3 p.m.

CELL CLASS: First session is three hours of classroom instruction followed by second session of two hours on the water. Register for either session or both. Space is limited. \$

29 SATURDAY

**The Art of the Bird with Ellen
Lawler: Part 2, Painting**

Ward Museum, 10 a.m.-4 p.m.

WARD MUSEUM CLASS: Capture the stunning beauty of wild birds through the art of watercolors. Through a full-day painting session with noted artist and professor emerita of biology Lawler, learn the techniques and skills to represent these enchanting creatures. This workshop can be taken separately or in conjunction with part 1 in the series; see Sept 22. \$

30 SUNDAY

Harpist Melissa Tardiff Dvorak & Flutist Julianna Nickel
Holloway Hall, Great Hall, 2 p.m.

PETER & JUDY JACKSON CHAMBER MUSIC SERIES: The lush, vibrant music of romantic and classic periods, with a touch of modern storytelling, is the flute and harp combination for this concert. An active soloist and chamber music musician, Salisbury native Tardiff-Dvorak performed at the 55th presidential inauguration, the world premiere of the film *Gods and Generals* and in private concert for the ambassador of Spain. Nickel teaches at the George Mason University School of Music and performs throughout the Washington, D.C., area. She has played with the National Symphony Orchestra and Washington National Opera. ★



october

1 MONDAY

Meditation Class

Holloway Hall, Great Hall, 5 p.m.

CLASS: See Sept. 17 for details. 🌟

1 MONDAY

Mental & Cultural Challenges of Refugee Resettlement in Modern America

Conway Hall 153, 6-7:30 p.m.

PACE IDIS 280 LECTURE SERIES: Featuring Joseph Venosa. See Aug. 27 for series details.

1 MONDAY

Arts & the Mind: Part 1: Creativity

Holloway Hall, Great Hall, 7 p.m.



INTERSECTION OF ART & SCIENCE FILM SERIES: This two-part special reveals the crucial impact of the arts on

the human brain and explores the vital role of the arts in human brain development throughout life. The series shares stories of how music, dance, painting, poetry and theatre markedly improve well-being at both ends of life, and reveals the cutting-edge science that explains the powerful, positive impact of the arts on our brains. There will be a post-screening discussion. Part 2 is Oct. 8. 🌟

2 TUESDAY

Iván Vergara & the Experience of Independent Publishing in Mexico, Spain & the U.S.

Conway Hall 152, 4:30 p.m.

LECTURE & READING: Poet and independent editor Iván Vergara offers an overview of the challenges of being CEO of an independent publisher. He also performs multimedia readings in both Spanish and English so the audience may experience the multiple ways "poetry" has evolved in the digital age.

Sponsored by the Modern Languages and Intercultural Studies Department.



3 WEDNESDAY

Complete Works for Cello & Piano by Beethoven: Part 1

Holloway Hall, Great Hall, 7 p.m.

SU MUSIC CONCERT: Featuring Jeffrey Schoyen, cello, and Ernest Barretta, piano. Part 2 is Wed., Nov. 28.



3 WEDNESDAY

WEDNESDAYS THROUGH OCTOBER 31

SU @ the Beach: History Making News, News Making History with David Burns

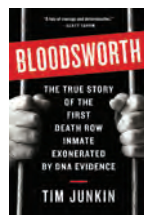
Ocean Pines Community Center, 4:30-6 p.m.

CELL CLASS: SU Associate Professor Burns discusses the way news and history have intersected in America. Sometimes history makes the news, and sometimes the news makes history. 💰

4 THURSDAY

One Maryland One Book: Bloodsworth by Tim Junkin

Guerrieri Academic Commons, Assembly Hall, 11 a.m.



ONE MARYLAND ONE BOOK AUTHOR TOUR: Junkin discusses his book, *Bloodsworth: The True Story of the First Death Row Inmate Exonerated by DNA Evidence*. The book encapsulates a historical criminal justice milestone that took place in the State of Maryland, which would eventually lead to the exoneration of hundreds of others wrongfully accused of heinous, violent crimes. Kirk Bloodsworth learned of a new technology, DNA fingerprinting, and realized it was his last chance to prove his innocence in this harrowing true crime account. *Bloodsworth* will be on sale at this event, and the author will be available for book signings.

Sponsored by Maryland Humanities, SU Fulton School of Liberal Arts, University of Maryland Eastern Shore, Wor-Wic Community College, the tri-county library systems of the lower Eastern Shore and the Lower Eastern Shore Humanities Network. One Maryland One Book is a program of the Maryland Center for the Book at Maryland Humanities.

3 & 4

Artist Martha Coburn

Workshop: Wed., Oct. 3, 3-6 p.m. Conway Hall 317

Artist Talk/Screening: Thur., Oct. 4, 5:30 p.m., Conway Hall 153

SU ART GALLERIES EVENTS: Coburn is a filmmaker and artist. She is best known for her animation films, which are created through puppetry, collage and paint-on-glass techniques.



4 THURSDAY

Flamenco Pasion: Compañía Flamenca Eduardo Guerrero

Holloway Hall Auditorium, 7 p.m.

DANCE: See page 8 for details. 🌟

5 FRIDAY

SU @ the Beach: Faculty Lecture Series

Ocean Pines Community Center, 3:30-5 p.m.

CELL LECTURE: See Sept. 21 for details. \$



Photo Credit: Goran Tomasevic/Reuters

5 FRIDAY

The U.S. & the Middle East: America's Troubled Moment

Guerrieri Academic Commons, Assembly Hall, 10 a.m.-8:30 p.m.

U.S. & MIDDLE EAST SYMPOSIUM: The event addresses the complexities of current U.S.-Middle East relations from various perspectives, including history, political science, literature, film, conflict analysis and geography. The U.S. played an increasingly active role in the Middle East, particularly during the presidency of George W. Bush, which brought about an unprecedented enthusiasm for a political transformation of the region. The "War on Terror" and the occupation of Iraq profoundly reconfigured the socio-political and economic dynamics of the Middle East and transformed America's role in the region.

Participants may attend some or all of the day's events. For details contact Emin Lelić: exlelic@salisbury.edu



6 SATURDAY

Sea Gull Century

SPECIAL EVENT: Celebrating 30 years, the nationally acclaimed bicycling event, beginning and ending on SU's campus, tours the Eastern Shore and offers two routes: Assateague Century Tour (100 miles) and Princess Anne Metric Tour (65 miles).

Learn more and register at: seagullcentury.org

6 SATURDAY

What Are We Waiting For? On Education as Learning How to Live in the Present Rather than Being Trained to Look Forward

Downtown Library, Children's Room, 122 S. Division Street, Salisbury, 10:30 a.m.-12:30 p.m.

PHILOSOPHY SATURDAYS: The featured speaker is Jeffrey Frank, St. Lawrence University, Department of Education. See Sept. 15 for details.

8 MONDAY

Meditation Class

Holloway Hall, Great Hall, 5 p.m.

CLASS: See Sept. 17 for details. *



8 MONDAY

The Environmental Impact of Human Movement Around the Globe

Conway Hall 153, 6-7:30 p.m.

PACE IDIS 280 LECTURE SERIES: Featuring Mary Gunther. See Aug. 27 for series details.

8 MONDAY

Arts & the Mind: Part 2: The Art of Connection

Holloway Hall, Great Hall, 7 p.m.

INTERSECTION OF ART & SCIENCE FILM SERIES: See Oct. 1 for details. There will be a post-screening discussion. *



8 MONDAY

The Emotions of Justice: Legal Equality in Early Modern Korea & Today

Conway Hall 156, 7 p.m.

FULTON PUBLIC HUMANITIES SERIES: Jisoo Kim, Korea Foundation Associate Professor of History at George Washington University, examines how a sense of being "wronged" played a crucial role in seeking and performing justice in early modern Korea, and how this situation compares to our modern justice system.



10 WEDNESDAY

Oktoberfest Featuring the Bay Brass

Commons, Bistro, 4:30-7:30 p.m.

INTERNATIONAL DINNER SERIES: * \$

october

10 WEDNESDAY

Mistrust & Metaphor: Communicating About Climate Change & Other Polarized Science Debates

Perdue Hall 156, 7:30 p.m.
ENVIRONMENTAL STUDIES COLLOQUIA: Since 2012, Katie Burke has worked as an editor at *American Scientist* and is currently their digital features editor. She discusses how one effectively communicates complicated and polarizing issues such as climate change to the general public.



11 THURSDAY

Artist Eoin Breadon

Conway Hall 153, 5:30 p.m.
SU ART GALLERIES ARTIST TALK: Breadon is a glass artist whose work is influenced by Irish folklore and craftsmanship. He works in the tradition of the seanchaí, the traditional Irish storyteller.

12 FRIDAY

SU on the Road: Guided Tour & Lunch at U.S. Naval Academy Annapolis, 8 a.m.-7 p.m.

CELL TRIP: Tour the Academy at 10:30 a.m., watch the noon formation and then head to lunch at Drydocks in Dahlgren Hall. After lunch, the bus drops off at the state capital and the remainder of the day is free to explore. \$

12 FRIDAY

SU @ the Beach: Faculty Lecture Series

Ocean Pines Community Center, 3:30-5 p.m.
CELL LECTURE: See Sept. 21 for details. \$

11-14 *

Stage Kiss

Fulton Hall, Black Box Theatre, 8 p.m. & * 2 p.m.

SU THEATRE: Art imitates life. Life imitates art. When two actors with a history are thrown together as romantic leads in a forgotten 1930s melodrama, they quickly lose touch with reality as the story onstage follows them offstage. (Mature Themes) \$



12 FRIDAY

Taste of the Chesapeake Dinner Featuring Red Letter Day

Commons, Bistro, 4:30-7:30 p.m.

INTERNATIONAL DINNER SERIES: Local musicians Suzanna Mallow on guitar and vocals, Andrea "AJ" Jones on sax, Colleen Clark on electric guitar and Becca Doughty on drums move effortlessly between genres of alt rock to funky country, to folk influenced - all with lots of harmony and heart. ☆ \$



12 FRIDAY

50th Anniversary Golden Goose Reception & Auction

Ward Museum, 5-8 p.m.

WARD MUSEUM EVENT: Celebrate the golden anniversary, 50 years of the Ward Foundation. Enjoy wine and cocktails and hors d'oeuvres inspired by the Eastern Shore. Support the Ward Foundation at the live auction, including original artwork, antique decoys, waterfowling collectibles and gift packages. View latest exhibits, including the "50 Finest Decoy Makers Before 1950." \$

12 FRIDAY

Feature Friday: Jerry Tabor Ear Alliance

The Brick Room, 116 N. Division St., 6-7 p.m.

CELL EVENT: Enjoy jazz music. Must be 21+ to enter.

12-14

Alumni Homecoming & Family Weekend

SPECIAL EVENT: Alumni and families are invited to SU for a weekend of fun.

For details visit: www.salisbury.edu/homecoming

13 SATURDAY

Homecoming Faculty/ Alumni Recital

Holloway Hall, Great Hall, 7:30 p.m.

SU MUSIC CONCERT

13 SATURDAY

Chesapeake Wildfowl Expo

Ward Museum, 8 a.m.-4 p.m.

WARD MUSEUM EVENT: The crisp, clear fall air and beautiful grounds of the museum will once again set the stage for a day of excitement, anticipation, and socialization among decoy collectors and carvers from across the country.

Chesapeake Wildfowl Expo pays tribute to decoys from the past while encouraging the carving of new ones. Enjoy special lectures and presentations on the Ward Brothers as part of the 50th anniversary. Admission to the event and museum is free!



15 MONDAY

Meditation Class

Holloway Hall, Great Hall, 5 p.m.

CLASS: See Sept. 17 for details. ✪

15 MONDAY

'Environmental Migrants,' 'Climate Refugees,' and 'Green Nativism' in the 21st Century

Conway Hall 153, 6-7:30 p.m.

PACE IDIS 280 LECTURE

SERIES: Featuring Shane Hall. See Aug. 27 for series details.



17 WEDNESDAY

René Marie: Experiment in Truth

Holloway Hall Auditorium, 7 p.m.

CONCERT & DISCUSSION: Marie has cemented her reputation as not only a singer but also a composer, arranger, theatrical performer and teacher. Guided and tempered by powerful life lessons and rooted in jazz traditions laid down by Ella Fitzgerald, Dinah Washington and other leading ladies of past generations, she borrows various elements of folk, R&B, and even classical and country to create a captivating hybrid style. Her body of work is musical, but it's more than just music. It's an exploration of the bright and dark corners of the human experience, and an affirmation of the power of the human spirit. ✪

Funded through the Mid Atlantic Tour program of the Mid Atlantic Arts Foundation with support from the National Endowment for the Arts and the Maryland State Arts Council.



15 MONDAY

NOVA: The Origami Revolution

Holloway Hall, Great Hall, 7 p.m.



INTERSECTION OF ART & SCIENCE FILM SERIES: The centuries-old tradition of folding two-dimensional

paper into three-dimensional shapes is inspiring a scientific revolution. The rules of folding are at the heart of many natural phenomena, from how leaves blossom to how beetles fly. But now, engineers and designers are applying its principles to reshape the world around us – and even within us, designing new drugs, micro-robots and future space missions. There will be a post-screening discussion. ✪



18 THURSDAY

Woodrow Wilson & the End of the Great War

Guerrieri Academic Commons, Assembly Hall, 6 p.m.

NABB CENTER EVENT: Judd Bankert portrays Woodrow Wilson (1856-1924) in a 45-minute performance followed by a Q&A session in and out of character. Bankert has portrayed President Wilson as part of the Woodrow Wilson Presidential Library and Birthplace's living history program and in a variety of other interpretive programs since 2000. Using the research facilities at the Presidential Library in Staunton, VA, Bankert has created unique programs drawing from Wilson's writings and speeches.

Co-sponsored by the Fulton Public Humanities Committee and History Department. See related exhibit beginning on Aug. 27.

17 WEDNESDAY

John Hoppenthaler Reading

Commons, Worcester Room, 8 p.m.



WRITERS ON THE SHORE: Hoppenthaler's books of poetry are *Lives of Water*, *Anticipate the Coming*

Reservoir and, most recently, *Domestic Garden*, all with Carnegie Mellon University Press. With Kazim Ali, he has co-edited a volume of essays and interviews on the poetry of Jean Valentine, *This-World Company*. His poetry appears in *Ploughshares*, *Virginia Quarterly Review*, *Southern Review* and many other acclaimed journals and anthologies.

18 THURSDAY

Discover SU: Henson Medical Simulation Center

Blackwell Hall, 4:30-5 p.m.

CELL EVENT: The Sim Center is a state-of-the-art center that creates lifelike teaching experiences using the latest in robotic technology set in a fully functional clinic. The Sim Center allows students to practice and develop confidence in a controlled and learning-friendly environment.

RSVP appreciated:
www.salisbury.edu/cell

19 FRIDAY

SU @ the Beach: Faculty Lecture Series

Ocean Pines Community Center, 3:30-5 p.m.

CELL LECTURE: See Sept. 21 for details. \$

20 SATURDAY

Pop Up Art

Ward Museum, 10 a.m.-Noon
WARD MUSEUM CLASS: Free art lesson and a limited-time exhibit with award-winning decoy carver Bill Belote. Admire his magnificent antique-style works, then learn how to paint an Arctic tern silhouette. Youth participants can even submit their piece to the 49th Annual Ward World Championship Wildfowl Carving Competition and Art Festival.



october



20 SATURDAY

The Life & Times of Beethoven: A Family Concert, Featuring Really Inventive Stuff

Holloway Hall Auditorium, 7 p.m.

SALISBURY SYMPHONY ORCHESTRA:

Professor Nigel Taproot, the affable and learned classical music aficionado, invites you to an original Really Inventive Stuff program for families celebrating Beethoven, his remarkable age and four famous notes.

Featuring the music of Beethoven's Fifth Symphony, with a playful peppering of fascinating facts and timely trivia. (Did you know Washington was president during Beethoven's lifetime? Roller skates were invented, too!) This enlightening performance is a splendid introduction to Beethoven's musical genius. \$



22 MONDAY

American Masters: John James Audubon: Drawn From Nature

Holloway Hall, Great Hall, 7 p.m.



INTERSECTION OF ART & SCIENCE FILM SERIES: The film creates a meaningful portrait of art and science in

the first decades of the 19th century. Audubon's growing apprehension about the destruction of nature became his prophecy. As an artist and naturalist, his achievements were monumental. Famous for *The Birds of America* – an astonishing collection of 435 life-size portraits of every bird then known in the United States – it took him 18 years to complete. There will be a post-screening discussion. ★

22 MONDAY

MONDAYS THROUGH DECEMBER 3

Lighthouse Literary Guild: Poetry Writing with Nancy Mitchell

Blackwell Hall, 6-7:30 p.m.

CELL CLASS: Six-week poetry writing class with Pushcart Prize-Winning poet. \$

23 TUESDAY

Prisons & the Power of Performance

Conway Hall 152, 3:30 p.m.

FULTON FACULTY

COLLOQUIA: Presented by John Wesley Wright, associate professor of music.



23 TUESDAY

Ailey II: The Next Generation of Dance

Holloway Hall Auditorium, 7 p.m.

This is a ticketed event.

2 free tickets per person available at the Guerrieri Student Union Information Desk

SU Students, Faculty, Staff & Alumni: Tues., Sept. 25

Community: Tues., Oct. 9

DANCE: Ailey II is universally renowned for merging the spirit and energy of the country's best young dance talent with the passion and creative vision of today's most outstanding emerging choreographers. Founded in 1974 as the Alvin Ailey Repertory Ensemble, the company embodies his pioneering mission to establish an extended cultural community that provides dance performances, training, and community programs for all people. Under the direction of Sylvia Waters from 1974 to 2012, Ailey II flourished into one of the most popular modern dance companies, combining a rigorous touring schedule with extensive community outreach programs. With Artistic Director Troy Powell at the helm, Ailey II continues to thrive as he brings a fresh dimension to this beloved company. ★ A



Photo by Kyle Froman

23 TUESDAY
TUESDAYS THROUGH
DECEMBER 4

**Lighthouse Literary Guild:
Appreciating Poetry
with Nancy Mitchell**

Blackwell Hall, 6-7:30 p.m.
CELL CLASS: This six-week class focuses on strategies to read, analyze and enjoy poetry. \$

25 THURSDAY

**Stigma in the Fabric of Society:
A Discussion of the LGBT
Experience during the
'80s & '90s**

Guerrieri Academic Commons,
Assembly Hall, 3:30 p.m.

PANEL DISCUSSION:
Discussion centers on the stigma and danger of being queer in America during the '80s and '90s, reviving the dialogue for a new generation. Panelists speak from multiple perspectives on the LGBT experience, among them guest speaker Tamar Carroll, associate professor of history at Rochester Institute of Technology and author of *Mobilizing New York: AIDS, Antipoverty, and Feminist Activism*. This discussion is part of a series of events centered on the AIDS Memorial Quilt during LGBT History Month.

Sponsored by the SU Libraries
Diversity and Inclusion Committee and
Fulton Public Humanities Program.

25 THURSDAY
THURSDAYS THROUGH
DECEMBER 6

**SU @ the Beach: Writing Your
Memoir with Emily Rich**

Ocean Pines Community
Center, 9-10:30 a.m.
CLASS: *Delmarva Review's*
Rich teaches this six-week
class on developing the craft
of writing. \$

25 THURSDAY
THURSDAYS THROUGH
DECEMBER 6

**Lighthouse Literary Guild:
Writing Your Novel or Memoir
with Pat Valdata**

Blackwell Hall, 6-8 p.m.
CELL CLASS: This six-week course covers essential skills to help writers who want to produce a good novel or memoir. \$

26 FRIDAY

**SU @ the Beach:
Faculty Lecture Series**

Ocean Pines Community
Center, 3:30-5 p.m.
CELL LECTURE: See Sept. 21
for details. \$

26 FRIDAY

Ratcliffe Shore Hatchery

Perdue Hall 3rd Floor,
11 a.m.-5 p.m.
SPECIAL EVENT: Learn more
about this annual business
competition:
shorehatchery.salisbury.edu



29 MONDAY

**Thereminist & Haken Continuum
Musician Rob Schwimmer**

Holloway Hall, Great Hall,
7 p.m.
INTERSECTION OF ART &
SCIENCE PERFORMANCE:
Schwimmer is a founding
member and co-director of
The NY Theremin Society.
Considered one of the top
theremin virtuosos in the
world, Schwimmer discusses
and performs on a theremin,
hailed as the world's earliest
electronic musical instrument.
It is the only musical
instrument that is not touched
to play. The theremin's tone is
generated by two high-
frequency oscillators and the
pitch controlled by the
movement of the performer's
hand toward and away from
the circuit. Schwimmer is also
a leading player of the Haken
Continuum fingerboard, a
music performance controller
and synthesizer. Another
performance is Oct. 30. ☆

29 MONDAY

**Immigration Enforcement at the
U.S./Mexico Border & Human
Rights Issues**

Conway Hall 153, 6-7:30 p.m.
PACE IDIS 280 LECTURE
SERIES: Featuring Tim Dunn.
See Aug. 27 for series details.



**29 MONDAY
THROUGH DECEMBER 19**

The Toys that Built an Engineer
Guerrieri Academic Commons,
1st Floor

Open During GAC Hours
NABB CENTER EXHIBIT:
Reminiscence about your
childhood and how times have
changed as you enjoy this
display compiled of Charles
Emery's childhood toys.
Emery is a Mardela Springs
resident and Nabb Research
Center board member with
deep Eastern Shore family
lineage. This display includes a
variety of toys dating from the
1930s to 1950s that were
wrapped in newspaper and
stored in the family attic since
1965 until recently unpacked
during a move.

30 TUESDAY

**Thereminist & Haken Continuum
Musician Rob Schwimmer**

Holloway Hall, Great Hall,
7 p.m.
INTERSECTION OF ART &
SCIENCE PERFORMANCE:
See Oct. 29 for details. ☆



26 FRIDAY

Peacherine Ragtime Society Orchestra: Spooky Silents

Holloway Hall Auditorium, 7 p.m.
FILM & CONCERT: The Peacherine Ragtime Society
Orchestra is "the premier American ragtime ensemble" as
hailed by *The Washington Post* and is rapidly becoming the
leading professional ragtime orchestra in the U.S. Formed
by young virtuoso Andrew Greene at the University of
Maryland in 2010, Peacherine recreates the syncopated
styling of a bygone era while underscoring classic silent
films using the original orchestral scores. The Halloween
program is three comedy shorts with music: Buster Keaton's
The Haunted House, Laurel and Hardy's *Habeas Corpus*,
and Charlie Chaplin's *One A.M.* Costumes welcome! ☆

november

1 THURSDAY

Artist James Labold

Conway Hall 153, 5:30 p.m.
SU ART GALLERIES ARTIST TALK: Labold's glass and mixed-media work explores the connections between patriotism, national identity and mythology in both object-based and installation formats.



1 THURSDAY

THURSDAYS THROUGH NOVEMBER 15

SU @ the Beach: Submitting Written Pieces Online with Tara Elliott

Ocean Pines Community Center, 4-5:30 p.m.

CELL CLASS: Learn the basics of submitting poetry, short stories and creative nonfiction to magazines and journals, including simultaneous submissions, first serial rights and knowing the correct formats. \$

2 FRIDAY

SU @ the Beach: Faculty Lecture Series

Ocean Pines Community Center, 3:30-5 p.m.

CELL LECTURE: See Sept. 21 for details. \$



1 THURSDAY

Cumming, Knier & Folger Recital

Holloway Hall, Great Hall, 7:30 p.m.

SU MUSIC CONCERT: Music Program faculty Danielle Cumming, Lee Knier and William Folger perform.



1-4*

Fall Dance Showcase

Holloway Hall Auditorium, 8 p.m. & *2 p.m.

SU DANCE COMPANY: Program features selected student choreography adjudicated by dance professionals. \$

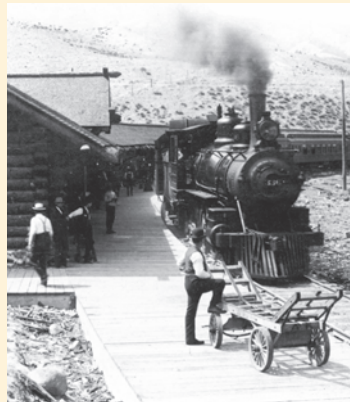
3 SATURDAY

Creative Writing Workshop with Special Collections

Guerrieri Academic Commons, Nabb Center Classroom (4th floor), 10 a.m.-Noon

NABB CENTER EVENT: Travel through time and place with a creative writing workshop at the Nabb Research Center. Led by SU history and English faculty and using the center's unique historical collections, attendees discover diarists who have traveled over the past 200 years and follow the journeys of history's artists and photographers. These original materials spark inspiration for the writers who then recreate or reinterpret examples from the library's Special Collections. See related exhibit beginning on Aug. 27.

Call to register: 410-543-6312.



3 SATURDAY

Hope & Action

Conway Hall 152, 9:30-11.30 a.m.

PHILOSOPHY SATURDAYS: The featured speaker is Kevin Wolfe, Princeton University, Department of Religious Studies. See Sept. 15 for details.

5 MONDAY

Migration & Immigration Issues on the Eastern Shore

Conway Hall 153, 6-7:30 p.m.

PACE IDIS 280 LECTURE SERIES: See Aug. 27 for series details.

6 TUESDAY

Americana Dinner Featuring Mojo Rider

Commons, Bistro, 4:30-7:30 p.m.

INTERNATIONAL DINNER SERIES: David Raizen and Jerry Adkins on guitar and vocals, Dave Sapp on brass, Chuck Reich on drums, and Randy Speidel are all about the songs – classic rock, blues, folk or country. If it moves them, they'll play it! 🍷 \$

6 TUESDAY

Fulton Hall 111, 6 p.m.

Charlie & Goliath Screening

PACE FILM & DISCUSSION: This documentary features Charlie Hardy, a 75-year-old penniless former Catholic priest who spent nearly a decade serving the poor while living in a cardboard shack in the barrios of Caracas, Venezuela. When he returned to his hometown of Cheyenne, WY, he was shocked to see poverty, hunger and homelessness. He won the Democratic Party nomination for U.S. Senate on a platform of getting money out of politics. The film tells the story of his campaign and illustrates "the value of fighting for what's right no matter how bleak the circumstances."

6 TUESDAY

Bumper Jacks

Holloway Hall Auditorium, 7 p.m.

CONCERT: Bumper Jacks paint America's story from the streets of New Orleans to Appalachian hollers. Unafraid to scrap together new sounds from forgotten 78s, they elegantly balance paying homage to the traditions while fashioning their own unique, playful style. The group began as a duo, a city-meets-country experiment between songstress Jess Eliot Myhre and banjo player Chris Ousley. They hopped on bicycles, touring the country, instruments on their backs, seeking to reimagine roots music. In five short years, they grew to a brassy seven-piece, with horns and pedal steel. They've been honored multiple times as the Mid-Atlantic's Artist of the Year and Best Traditional Band at the Washington Area Music Awards. 🌟



7 WEDNESDAY

The Daily Record Path to Excellence

Guerrieri Academic Commons, 5-7 p.m.

SU PRESIDENT'S OFFICE EVENT: SU welcomes *The Daily Record's* Top 100 Women and other leading women to network, give back to the community and create important professional connections. Light food, beer, wine and beverages will be served. Space is limited.

THE DAILY RECORD

MARYLAND'S
TOP 100
WOMEN

Event is free, but registration is required: 443-524-8100 or events@thedailyrecord.com.

7 WEDNESDAY

Structures of Violence: Narrative & Environmental Memory in the Plantationocene

Perdue Hall 156, 7:30 p.m.

ENVIRONMENTAL STUDIES COLLOQUIA: Rebecca Evans is an assistant professor in the Department of English at Winston-Salem State University. She argues that friction between genres dramatizes both the presence of environmental and structural violence and the difficulty of integrating an understanding of such systemic violence into daily life. The talk thus addresses both contemporary literary/cinematic/television genre formation and a broader assessment of the relationship between speculative genres and environmental rhetoric.

8 THURSDAY

French Week Dinner Featuring Stereo Strings

Commons, Bistro, 4:30-7:30 p.m.

INTERNATIONAL DINNER SERIES: Stereo Strings is a strolling duo featuring violinist Stephanie Meyers and musette accordion player Lou Coppola. 🌟 \$

9 FRIDAY

Feature Friday: Fellow Travelers with Michael O'Loughlin

The Brick Room, 116 N. Division St., 6-7 p.m.

CELL EVENT: Enjoy this Celtic duo. Must be 21+ to enter.

9 FRIDAY

SU @ the Beach: Faculty Lecture Series

Ocean Pines Community Center, 3:30-5 p.m.

CELL LECTURE: See Sept. 21 for details. \$

9 FRIDAY

Singers' Showcase

Holloway Hall, Great Hall, 8 p.m.

SU MUSIC CONCERT



10 SATURDAY

Art for Earthlings: Philosophy & Art in an Age of Environmental Crisis

SU Art Galleries | Downtown, 9:30-11.30 a.m.

PHILOSOPHY SATURDAYS: The featured speaker is Rachel E. Jones, George Mason University, Department of Philosophy. See Sept. 15 for details.



10 SATURDAY

1968 at 50

Conway Hall 179, 10 a.m.-3 p.m.

ADVENTURES IN IDEAS: HUMANITIES SEMINAR: In the U.S., there were assassinations, riots, anti-war protests and a presidential campaign like no other. Abroad, there was the Tet Offensive, unrest in Paris and Prague, and Olympics in Mexico. Paramount was the music – the age's soundtrack. Dean Kotlowski (History) and Danielle Cumming (Music) lead a historical and cultural journey back to 1968; the year America and the world seemed to be "coming apart" and yet held together. \$



november

12 MONDAY

Linguistic Profiling of Immigrants

Conway Hall 153, 6-7:30 p.m.
PACE IDIS 280 LECTURE
SERIES: Featuring Derya Kulavuz-Onal. See Aug. 27 for series details.

14 WEDNESDAY

Thanksgiving Dinner

Commons, Bistro,
4:30-7:30 p.m.

INTERNATIONAL DINNER
SERIES: 🍷 \$

14 WEDNESDAY

Youth Symphony Orchestra

Holloway Hall Auditorium,
7:30 p.m.

SU MUSIC CONCERT

14 WEDNESDAY

Zach Powers Reading

Commons, Worcester Room,
8 p.m.



WRITERS ON THE SHORE: Powers' novel, *First Cosmic Velocity*, is forthcoming from Putnam, and his debut

story collection, *Gravity Changes*, won the BOA Short Fiction Prize and was published in 2017. His work has appeared in *Black Warrior Review*, *PANK*, the *Tin House* blog and elsewhere. He co-founded the literary arts nonprofit Seersucker Live. He manages marketing at The Writer's Center. His writing for television won an Emmy.

15 THURSDAY

Discover SU: Nabb Research Center for Delmarva History and Culture

Blackwell Hall, 4:30-6 p.m.
CELL EVENT: Join Nabb Center Director Creston Long for a behind-the-scenes look at the Nabb Center's collections, exhibitions and state-of-the-art archives.

RSVP appreciated:
www.salisbury.edu/cell



Photo credit:
Todd Dudek

15 THURSDAY

An Evening of Percussion & World Drum Experience

Holloway Hall Auditorium,
7:30 p.m.

SU MUSIC CONCERT: SU Percussion Ensemble and World Drum Ensemble present their fall concert under the direction of Eric Shuster and Ted Nichols.



14 WEDNESDAY

Mill Ponds & Dams Sites

Guerrieri Academic Commons, Assembly Hall, 7 p.m.

NABB CENTER LECTURE: Michael Folkoff, SU professor emeritus of geography, shares his multi-year research on local dam sites and mill ponds.



15 THURSDAY THROUGH MARCH 29

Sabrina Ratté: Shifting Landscapes

Conway Hall, Electronic Gallery

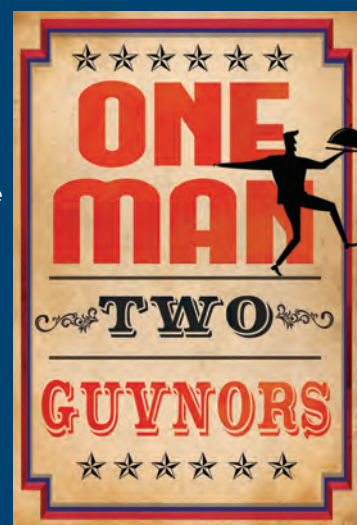
SU ART GALLERIES EXHIBIT: Ratté lives and works between Montreal and Paris. From utopian architecture to painterly textures, she investigates the fine line between the virtual and the physical realm. Her work includes single-channel videos, installations, sculptures, live performances and prints.

15-18*

One Man, Two Guvnors

Fulton Hall, Black Box Theatre, 8 p.m. & *2 p.m.

SU THEATRE: This hilarious, Tony Award-winning update of the 18th century Italian farce *The Servant of Two Masters* transports us to the British seaside town of Brighton in 1963 and presents slapstick at its finest, with prop comedy, actors falling down stairs and slamming doors, mistaken identities, double entendres, and interaction with the audience. And the revelry is accompanied by a live skiffle band, playing music reminiscent of the early Beatles. (Mature Content) \$



16 FRIDAY

SU on the Road: Library of Congress

Washington, D.C.,
7:30 a.m.-9 p.m.

CELL TRIP: Guided tour of the Thomas Jefferson building and then explore the Library of Congress on your own. \$

16 FRIDAY

SU @ the Beach: Faculty Lecture Series

Ocean Pines Community
Center, 3:30-5 p.m.

CELL LECTURE: See Sept. 21
for details. \$

17 SATURDAY

New York City On Your Own

BUS TRIP: Travel to the Big
Apple for a day on your own
in the city. 🚗 \$



17 SATURDAY

Native American History Month at the Ward Museum

Ward Museum,
10 a.m.-3 p.m.

WARD MUSEUM EVENT:
Join the Ward Museum for
a pop-up art exhibit, hands-
on craft activity and a
heritage panel discussion
with local tribal leaders to
celebrate Native American
History Month.

19 MONDAY

The Psychological Perspective on Attitudes toward Immigrants & Refugees with Rachel Steele

Conway Hall 153, 6-7:30 p.m.

PACE IDIS 280 LECTURE
SERIES: See Aug. 27 for series
details.



19 MONDAY

THROUGH DECEMBER 8

59th Bi-Annual Senior Exhibitions: Graphic Design

Fulton Hall, University Gallery
Visiting Graphic Designer Talk: Thurs., Nov. 29,
Conway Hall 153, 5:30 p.m.

Awards Reception: Fri., Nov. 30, 5-7 p.m.

SU ART GALLERIES EXHIBIT



28 WEDNESDAY THROUGH DECEMBER 15

59th Bi-Annual Senior Exhibitions: Fine Arts

Downtown Gallery

Awards Reception: Fri., Dec. 7, 5-7 p.m.

SU ART GALLERIES EXHIBIT

26 MONDAY

Ecology of Refuge

Conway Hall 153, 6-7:30 p.m.

PACE IDIS 280 LECTURE

SERIES: Featuring Yuki

Okubo. See Aug. 27 for series
details.

27 TUESDAY

Behavioral Science for Media Content Evaluation

Conway Hall 152, 3:30 p.m.

FULTON FACULTY

COLLOQUIA: Presented by
Leelanga Seneviratne, visiting
scholar of communication
arts.

28 WEDNESDAY

Complete Works for Cello & Piano by Beethoven: Part 2

Holloway Hall, Great Hall,
7 p.m.

SU MUSIC CONCERT:

Featuring Jeffrey Schoyen,
cello, and Ernest Barretta,
piano. Part 1 is Wed., Oct. 3.

30 FRIDAY

SU @ the Beach:

Faculty Lecture Series

Ocean Pines Community
Center, 3:30-5 p.m.

CELL LECTURE: See Sept. 21
for details. \$

30 FRIDAY

Losing Land, Losing Birds: Climate Change & Our Wildlife

Ward Museum, 4 p.m.

WARD MUSEUM FILM & DISCUSSION: Join Tom Horton and Sonja Kolstoe, Environmental Studies Department, for a film screening and discussion about climate change and its effects on our area and our wildlife. Beginning with a screening of the documentary *High Tide in Dorchester County*, the evening also features Kolstoe's latest research on the consequences of forecasted changes in land cover and climate to the birds and the people who love to watch them.



december

1 SATURDAY

Salisbury & University Chorales

Holloway Hall Auditorium, 7:30 p.m.

SU MUSIC CONCERT: The chorales perform with the Capital Ringers, a premier hand-bell ensemble. The concert features selections for hand bells and choir and musical numbers featuring hand bells only and choir only, including a preview of their spring 2019 work *Carmina Burana* by Carl Orff. \$



3 MONDAY

Scanning the Pharaohs: CT Imaging of the New Kingdom Royal Mummies with Sahar Saleem

Great Hall of Holloway Hall, 7 p.m.

INTERSECTION OF ART & SCIENCE LECTURE: The royal mummies in the Cairo Museum are an important source of information about the lives of the ancient Egyptians. They can inform us about their age at death and medical conditions from which they may have suffered, as well as the mummification



process and objects placed within the wrappings. Using the latest technology, including Multi-Detector Computed Tomography and DNA analysis, Saleem discusses the results of the examination of royal mummies of the 18th-20th dynasties. New imaging techniques not only reveal a wealth of information about each mummy, but render amazingly lifelike and detailed images of the remains. *

Sponsored by World Artists Experiences, Inc. and the Embassy of the Arab Republic of Egypt, Washington, D.C.

3 MONDAY

Civic Reflection Discussion

Conway Hall 153, 6-7:30 p.m.

PAGE IDIS 280 LECTURE SERIES: Featuring Yuki Okubo and Cathrene Connery. See Aug. 27 for series details.

4 TUESDAY

Together for the Holidays

Holloway Hall Auditorium, 7:30 p.m.

SU MUSIC CONCERT: Featuring the Salisbury Pops.



Photo courtesy of Historic St. Mary's City

5 WEDNESDAY

Land, Weather, Spirit: Toward an Environmental History of Slavery in Maryland

Perdue Hall 156, 7:30 p.m.

ENVIRONMENTAL STUDIES COLLOQUIA: Tony Perry, American studies faculty at University of Maryland College Park and pre-doctoral fellow at the Carter Woodson Institute for African American and Africa Studies at University of Virginia, charts the contours of a Maryland-based environmental history of slavery through an examination of three scenes. Together these scenes richly illustrate different dimensions of enslaved people's relationship to the landscape, climate, and supernatural environments of antebellum Maryland.

5 WEDNESDAY

Holidays Around the World: A Celebration of Hanukkah, Christmas & Kwanzaa.

Commons, Bistro, 4:30-7:30 p.m.

INTERNATIONAL DINNER SERIES: This celebration of Hanukkah, Christmas and Kwanzaa features music by alternative klezmer band Alexandria Klezmet, SU alumna Miranda Haney and SU African Drum Ensemble. Please note: Salisbury University does not have a kosher kitchen. * \$



6 THURSDAY

War & Peace in East Asia

Guerrieri Academic Commons, 430K, 6 p.m.

SYMPOSIUM: SU's History M.A. Program students present their research on early modern China, Japan and Korea.

5-9*

Jesus Christ Superstar

Fulton Hall, Black Box Theatre, 8 p.m. & *2 p.m.

SU OPERA THEATRE: From concept album to global phenomenon, Tim Rice and Andrew Lloyd Webber's iconic production with its musically anachronistic setting of the Jesus story features SU's most explosive and finest vocal talent. The historically celebrated yet controversial work is co-directed by John Wesley Wright and Matt Saltzberg with musical direction by William Folger. (Mature Content) \$



6 THURSDAY

Artist Victor Pacheco

Conway Hall 153, 5:30 p.m.

SU ART GALLERIES ARTIST

TALK: Pacheco's work explores identity formation. Multiple viewpoints of identity are engaged in shaping, organizing and addressing the realities of Latino and African American communities.



6 THURSDAY

Jazz Ensemble

Holloway Hall Auditorium, 7:30 p.m.

SU MUSIC CONCERT

7 FRIDAY

Piano & Strings Concert

Holloway Hall, Great Hall, 2 p.m.

SU MUSIC CONCERT

7 FRIDAY

SU @ the Beach: Faculty Lecture Series

Ocean Pines Community Center, 3:30-5 p.m.

CELL LECTURE: See Sept. 21 for details. \$

7 FRIDAY

Feature Friday Performance

Brick Room, 116 N. Division St., 6-7 p.m.

CELL EVENT: Enjoy music by Nan Richerson and Mary-Tyler Upshaw. Must be 21+ to enter.



8 SATURDAY

Winter Holiday Is in the Aire, Featuring Melissa Harvey

Holloway Hall Auditorium, 7:30 p.m.

SALISBURY SYMPHONY ORCHESTRA: Soprano Harvey's impressive stylistic versatility can be heard in operatic and concert repertoire spanning over four centuries. Her recent activity in 20th and 21st century opera includes the world premiere of Douglas Pew's *Lo the Bridegroom Comes*, Alice in Unsub Chin's *Alice in Wonderland*, Flora (cover) in New York City Opera's production of *The Turn of the Screw*, three world premieres with the Cincinnati-based NANOWorks Opera, and Lucinda with Gotham Chamber Opera and Opera Philadelphia for the world premiere of Nico Muhly's *Dark Sisters*. \$

8 SATURDAY

Silver Bells Holiday Quarter & Benefit Auction

Ward Museum, 5 p.m. Preview & 6 p.m. Auction

WARD MUSEUM EVENT: Bring quarters or get them from us to bid on great items from local businesses. General admission gets you into the auction to bid and one paddle. \$



10 MONDAY

Global migration and diasporic return: A case study of returning Koreans from China, Japan and Russia

Conway Hall 153, 6-7:30 p.m.

PACE IDIS 280 LECTURE

SERIES: Eun-Jeong Han discusses communication strategies of Asian female marriage immigrants and their Korean husbands to deal with mainstream Koreans' prejudice and xenophobia. See Aug. 27 for series details.

11 TUESDAY

Finic as a Microcosm of Masculinity, Disability & Race: From Charlotte Brontë's 1830s Novellas to Jane Eyre (1847)

Conway Hall 152, 3:30 p.m.

Fulton Faculty Colloquia: Presented by Judith Pike, professor of English.

11 TUESDAY

PRESTO Recitals

Holloway Hall, Great Hall, 5 & 7 p.m.

CELL CONCERT: Enjoy student performances.

13 THURSDAY

Discover SU: GIS Facility

Blackwell Hall, 4:30-6 p.m.

CELL EVENT: Learn about SU's geographic information systems facility.

RSVP appreciated: www.salisbury.edu/cell

14 FRIDAY

SU on the Road: Christmas in St. Michaels

St. Michaels, 1-6 p.m.

CELL TRIP: Explore the magic of the holiday season in this coastal village. \$

14 FRIDAY

SU @ the Beach: Faculty Lecture Series

Ocean Pines Community Center, 3:30-5 p.m.

CELL LECTURE: See Sept. 21 for details. \$

15 SATURDAY

Winter Wonderland Holiday Crafts & Visit from Santa Claus

December 15, 10 a.m.-2 p.m.

WARD MUSEUM EVENT: The Ward Museum and local businesses welcome the community to a celebration of the winter season. The holiday social is paired with Drop-in Art for the creative in you. The lobby and grounds will be decked out for the holidays, offering a perfect setting for a community gathering in honor of the season. Have your picture taken with Santa and make delightful winter crafts.



contacts & categories

All events are listed here by their sponsoring program/department. Find out the date of the event in which you are interested and look to the calendar for more information. Contact information is provided in case you have questions.

Alumni Homecoming & Family Weekend • 410-543-6042

Oct. 12-14

Adventures In Ideas: Humanities Seminar • 410-543-6450

Sept. 22.....Artificial Intelligence in Science Fiction & Film: Pain & the Pathways to Personhood
Nov. 10.....1968 at 50

SU Art Galleries • 410-548-2547

EXHIBITS

Through Oct. 25Timothy Nohe: Voltage Is Signal
Aug. 20-Oct. 27Remake/Remodel
Sept. 7-Nov. 10.....Hyphenative (Reception: Sept. 7)
Nov. 15-Mar. 29.....Sabrina Ratté: Shifting Landscapes
Nov. 19-Dec. 859th Bi-Annual Senior Exhibitions: Graphic Design
Nov. 28-Dec.15.....59th Bi-Annual Senior Exhibitions: Fine Arts

EVENTS

Sept. 13.....Artist Édouard Duval-Carrié Talk
Sept. 20.....Artist Adrian Waggoner Talk
Sept. 27.....Artist Heather Harvey Talk
Oct. 3Artist Martha Coburn Workshop
Oct. 4Artist Martha Talk/Screening
Oct. 11Artist Eoin Breadon Talk
Oct. 25Artist Timothy Nohe Talk
Nov. 1Artist James Labold Talk
Dec. 6Artist Victor Pacheco Talk

Center for Extended & Lifelong Learning • 410-543-6090

SU ON THE ROAD

Sept. 21Maryland Historical Society & Museum
Sept. 25September in Solomons Island
Oct. 12Guided Tour & Lunch at U.S. Naval Academy
Nov. 16Library of Congress
Dec. 14Christmas in St. Michaels

SU @ THE BEACH

Sept. 13-Oct. 18Writing Your Memoir with Emily Rich (Thursdays, 2 sections)
Oct. 25-Nov. 6
Sept. 15-Oct. 20Write It Right with Susan Canfora (Saturdays)
Sept. 21-Dec. 14Faculty Lecture Series (Fridays)
Sept. 22.....SU Sailing Club Regatta & Reception
Sept. 25-Oct. 2Digging into Ireland's Past: Archaeology & Early History with Beth Ragan (Tuesdays)
Sept. 29.....Basics of Sailing
Oct. 3-31History Making News, News Making History with David Burns (Wednesdays)
Nov. 1-15Submitting Written Pieces Online with Tara Elliott (Thursdays)

LIGHTHOUSE LITERARY GUILD

Aug. 23-24Poetry Writing Retreat with James Arthur
Aug. 23Poetry Reading with James Arthur
Sept. 10-Oct. 15Poetry Writing with Nancy Mitchell (Mondays, 2 sections)
Oct. 22-Dec. 3
Sept. 11-Oct. 16Appreciating Poetry with Nancy Mitchell (Tuesdays, 2 sections)
Oct. 23-Dec. 4
Sept. 13-Oct. 18Writing Your Novel or Memoir with Pat Valdata (Thursdays, 2 sections)
Oct. 25-Dec. 6
Sept. 26-Oct. 3Submitting Written Pieces Online with Tara Elliott (Wednesdays)

PRESTO MUSIC

Sept. 10-Dec. 10PRESTO Lessons (schedules vary)
Dec. 11Recitals

FEATURE FRIDAYS CONCERTS

Sept. 14.....Diana Wagner & Louise Anderson
Oct. 12Jerry Tabor Ear Alliance
Nov. 9Fellow Travelers with Michael O'Loughlin
Dec. 7Nan Richerson & Mary-Tyler Upshaw

DISCOVER SU TOURS

Sept. 20.....Campus Sculptures
Oct. 18Henson Medical Simulation Center
Nov. 15.....Nabb Research Center for Delmarva History & Culture
Dec. 13GIS Facilities

Cultural Affairs Office • 410-543-6271

Oct. 17René Marie: Experiment in Truth Concert & Discussion
Oct. 23Ailey II Dance
Oct. 26Peacherine Ragtime Society Orchestra: Spooky Silents Film & Concert
Nov. 6Bumper Jacksons Concert
Nov. 17New York City On Your Own Bus Trip

THE INTERSECTION OF ARTS & SCIENCES SERIES

Sept. 17-Oct. 15Meditation Classes (Mondays)
Sept. 26New Discovery of the Pyramids Lecture
Oct. 1Arts & the Mind: Part 1: Creativity Film
Oct. 8Arts & the Mind: Part 2: The Art of Connection Film
Oct. 15NOVA: The Origami Revolution Film
Oct. 22American Masters: John James Audubon: Drawn From Nature Film
Oct. 29 & 30.....Thereminist & Haken Continuum Musician Rob Schwimmer Concerts
Dec. 3.....Scanning the Pharaohs: CT Imaging of the New Kingdom Royal Mummies Lecture

HISPANIC HERITAGE MONTH EVENTS

Sept. 10Time Scanners: Machu Picchu Film
Sept. 12Hispanic Heritage Dinner
Sept. 12La Patronal Concert
Sept. 17Dolores Film
Oct. 4Compañía Flamenca Eduardo Guerrero: Flamenco Pasion Dance

PETER & JUDY JACKSON CHAMBER MUSIC SERIES

Sept. 30Harpist Melissa Tardiff Dvorak & Flutist Julianna Nickel

INTERNATIONAL DINNER SERIES

Sept. 10Rosh Hashanah Dinner
Sept. 12Hispanic Heritage Dinner
Oct. 10Oktoberfest Featuring the Bay Brass
Oct. 12Taste of the Chesapeake Dinner Featuring Red Letter Day
Nov. 6Americana Dinner Featuring Mojo Rider
Nov. 8French Week Dinner Featuring Stereo Strings
Nov. 14.....Thanksgiving Dinner
Dec. 5.....Holidays Around the World: A Celebration of Hanukkah, Christmas & Kwanzaa

The Daily Record Path to Excellence Event • 443-524-8100

Nov. 7.....Maryland's Top 100 Women

Environmental Studies Colloquium Series • 410-543-8105

- Oct. 10Mistrust & Metaphor: Communicating About Climate Change & Other Polarized Science Debates
Nov. 7Structures of Violence: Narrative & Environmental Memory in the Plantationocene
Dec. 5Land, Weather, Spirit: Toward an Environmental History of Slavery in Maryland

Fulton Faculty Colloquia • 410-543-6450

- Sept. 25Why Yellow? Discovering the Lost History of the Jewish Identifier
Oct. 23Prisons & the Power of Performance
Nov. 27Behavioral Science for Media Content Evaluation
Dec. 11Finnic as a Microcosm of Masculinity, Disability & Race: From Charlotte Brontë's 1830s Novellas to Jane Eyre (1847)

Fulton Public Humanities Series • 410-543-6245

- Oct. 8The Emotions of Justice: Legal Equality in Early Modern Korea & Today

History Department Events • 410-543-6245

- Oct. 5U.S. & Middle East Symposium - The U.S. & the Middle East: America's Troubled Moment
Dec. 6War & Peace in East Asia Symposium

Institute for Retired Persons • 410-742-8310

- Sept. 4Institute for Retired Persons First Meeting

SU Libraries Diversity & Inclusion Committee • 410-677-0118

- Oct. 25Stigma in the Fabric of Society:
A Discussion of the LGBT Experience During the '80s & '90s

Modern Languages & Intercultural Studies Department 410-543-6341

- Sept. 13Artist Édouard Duval-Carrié Talk
Oct. 2Iván Vergara & the Experience of Independent Publishing in Mexico, Spain & the U.S.

Music, Theatre & Dance Department • 410-548-5588

MUSIC PROGRAM

- Sept. 19Allegheny Ensemble: Enigmatic Elgar
Oct. 3Complete Works for Cello & Piano by Beethoven: Part 1
Oct. 13Homecoming Faculty/Alumni Recital
Nov. 1Cumming, Knier & Folger Recital
Nov. 9Singers' Showcase
Nov. 14Youth Symphony Orchestra
Nov. 15An Evening of Percussion & World Drum Experience
Nov. 28Complete Works for Cello & Piano by Beethoven: Part 2
Dec. 1Salisbury & University Chorales
Dec. 4Salisbury Pops: Together for the Holiday
Dec. 6Jazz Ensemble
Dec. 7Piano & Strings Concert

OPERA THEATRE WORKSHOP

- Dec. 5-9Jesus Christ Superstar

BOBBI BIRON THEATRE

- Oct. 11-14Stage Kiss
Nov. 15-18One Man, Two Guvnors

SU DANCE COMPANY

- Nov. 1-4Fall Dance Showcase

Nabb Center • 410-543-6312

EXHIBITS

- Ongoing.....Delmarva: People, Place & Time
Aug. 27-Dec. 19Over Here & Over There: The World at War, 1914-1918 (Reception: Sept. 20)
Aug. 27-Dec. 19Traveling Through Special Collections: Vignettes of Voyages & Travel (Reception: Sept. 13)
Oct. 29-Dec. 19The Toys that Built an Engineer

EVENTS

- Sept. 19African American History on the Eastern Shore
Sept. 29Joan Gaither: Documentary Story Quilter
Oct. 18Woodrow Wilson & the End of the Great War
Nov. 3Creative Writing Workshop with Special Collections
Nov. 14Mill Ponds & Dams Sites

One Maryland One Book • 410-543-6450

- Oct. 4Bloodsworth by Tim Junkin

PACE (Institute for Public Affairs and Civic Engagement) 410-677-5045

- Aug. 27-Dec. 10Immigration, Migration & Displacement IDIS 280 Lecture Series (Select Mondays)
Sept. 17Constitution Day Candidate Meet & Greet
Sept. 19The Mathematics of Elections: Societal Preference Order
Nov. 6Charlie & Goliath Film & Discussion

Philosophy Saturdays • pafilutze@salisbury.edu • 410-677-5070

- Sept. 15What Do Magnets, Souls & Blood Have in Common? Early Greek Accounts of Nature
Oct. 6What Are We Waiting For? On Education as Learning How to Live in the Present Rather than Being Trained to Look Forward
Nov. 3Hope and Action
Nov. 10Art for Earthlings: Philosophy & Art in an Age of Environmental Crisis

Salisbury Symphony Orchestra • 410-543-8366

- Oct. 20The Life & Times of Beethoven: A Family Concert, Featuring Really Inventive Stuff
Dec. 8Winter Holiday Is in the Aire, Featuring Melissa Harvey

Sea Gull Century • 410-548-2772

- Oct. 6

Ward Museum • 410-742-4988

- Every TuesdayeBird Tuesdays

EXHIBITS

- Through Aug. 1950 Years of Art, Nature & Tradition: Ward Foundation Retrospective
Through Sept. 23Through Artist Eyes: The Eastern Shore Revealed
Aug. 24-Feb. 17A Century of Conservation: The 1918 North American Migratory Bird Treaty
Sept. 28-Feb. 1750 Finest Decoy Makers Before 1950

EVENTS

- Oct. 1250th Anniversary Golden Goose Reception & Auction
Oct. 13Chesapeake Wildfowl Expo
Nov. 17Native American History Month Event
Dec. 8Silver Bells Holiday Quarter & Benefit Auction
Dec. 15Winter Wonderland Holiday Crafts & Visit from Santa Claus

EDUCATION

- Sept. 13Grandpa, Redheads & the X-Factor:
The Story Behind the Design of the Ward Museum of Wildfowl Art
Sept. 22The Art of the Bird with Ellen Lawler: Part 1, Drawing
Sept. 29The Art of the Bird with Ellen Lawler: Part 2, Painting
Oct. 20Pop Up Art
Nov. 30Losing Land, Losing Birds: Climate Change & Our Wildlife

Writers On The Shore • 410-543-6250

- Sept. 5Creative Writing Festival Featuring Christine Spillson
Sept. 26Stephanie Kartalopoulos
Oct. 17John Hopenthaler
Nov. 14Zach Powers

general info, hours & costs

To make your visit to SU enjoyable, here are a few helpful hints:

- Follow SU on social media for all the latest:



- INFORMATION: If you need more information, want to confirm a date or have questions:

- Call the cultural events hotline at 410-677-4685.
- Visit: www.salisbury.edu/newsevents

- ARTS MINUTE: You can receive the SU Arts Minute weekly email. Just send an email requesting to join the mailing list to: publicrelations@salisbury.edu

- CULTURAL AFFAIRS EMAIL: You can receive the This Week at SU Cultural Affairs weekly email. Just send an email requesting to join the mailing list to: culturalaffairs@salisbury.edu

Office of Cultural Affairs

For organization or event information call: 410-543-6271 or 410-548-5697

www.salisbury.edu/culturalaffairs

Facebook: Cultural Affairs at Salisbury University
Twitter: @SU_CulAffairs
jekrell-salgado@salisbury.edu
culturalaffairs@salisbury.edu

- New York City On Your Own Bus Trip: Sign up at Guerrieri Student Union Information Desk
 - SU Students, Faculty, Staff & Alumni: \$50 (sign-up begins Fri., Oct. 19)
 - Community: \$60 (sign-up begins Fri., Oct. 26)

Cost of tickets must be paid in full at the time of sign-up. No refunds for cancellations unless the seat is filled. Seats may not be transferred.

Cultural Laureate Program

SU students are invited to participate in the Cultural Laureate Program by attending at least five different select cultural events per semester. For information visit: www.salisbury.edu/culturalaffairs/clp or culturalaffairs@salisbury.edu

Adventure in Ideas: Humanities Seminar Series

Cost (including continental breakfast and lunch) \$30
Sponsored by the Fulton School of Liberal Arts and the Whaley Family Foundation.
For more information contact the Fulton School Dean's Office, Donna Carey: 410-543-6450 or dmcarey@salisbury.edu

SU Art Galleries

- University Gallery
Located in Fulton Hall, just off the main lobby in Room 109
410-548-2547
- SU Art Galleries | Downtown
212 West Main Street
Gallery Building
410-548-2401
- Electronic Gallery
Conway Hall 128
For SU Art Galleries hours, visit or call: www.salisbury.edu/universitygalleries

Center for Extended & Lifelong Learning

1116 Camden Avenue
University House
410-543-6089
CELL@salisbury.edu
www.salisbury.edu/cell

SU on the Road

- Maryland Historical Society & Museum: \$50
- September in Solomons Island: \$150
- Guided Tour & Lunch at U.S. Naval Academy: \$60, includes lunch
- Library of Congress: \$TBA
- Christmas in St. Michaels: \$TBA

SU @ the Beach

- Writing Your Memoir with Emily Rich: \$60
- Write It Right with Susan Canfora: \$60
- Faculty Lecture Series: \$8 per lecture • \$75 for the 12-week series.
- Digging into Ireland's Past with Beth Ragan: \$30
- Basics of Sailing: \$15 classroom only, \$85 on-boat only; \$100 for both, includes lunch
- Submitting Written Pieces Online with Tara Elliott: \$30
- History Making News, News Making History with David Burns: \$60

Lighthouse Literary Guild

- Poetry Writing Retreat with James Arthur: \$175 (\$160 Eastern Shore Writing Association members)
- Poetry Writing with Nancy Mitchell: \$60
- Appreciating Poetry with Nancy Mitchell: \$60
- Writing Your Novel or Memoir with Pat Valdata: \$80
- Submitting Written Pieces Online with Tara Elliott: \$30

Institute for Retired Persons

410-742-8310
irp@salisbury@gmail.com
www.salisbury.edu/irp

International Dinner Series

Commons, Bistro, 4:30-7:30 p.m.
Most meals have entertainment from 5-7 p.m.
Cost (plus tax): \$14.20; children (6 & under) \$8.55

Music, Theatre & Dance Department Ticketed Events

- ADMISSION
- \$12 adults
 - \$9 seniors 62+, SU alumni & all students (ID required)
 - One free with SU ID (Thursday nights ONLY - Reservation required)
 - Groups of 10 or more call for reservations and pricing

SPECIAL NEEDS PATRONS

- Please call the Box Office in advance to request special seating

TO PURCHASE TICKETS

- Cash, Visa, MasterCard and checks payable to Salisbury University accepted
- Online 24/7 www.salisbury.edu/performingarts
Ticket operations fee applied
- By Phone: 410-543-6228
- At the Box Office
Fulton Hall 100
Monday-Friday,
10 a.m.-4 p.m.

PLEASE ARRIVE ON TIME!

- For Black Box Theatre performances, guests who already have tickets are encouraged to arrive 30 minutes prior to the scheduled curtain time. All late seating is at the discretion of theatre management.

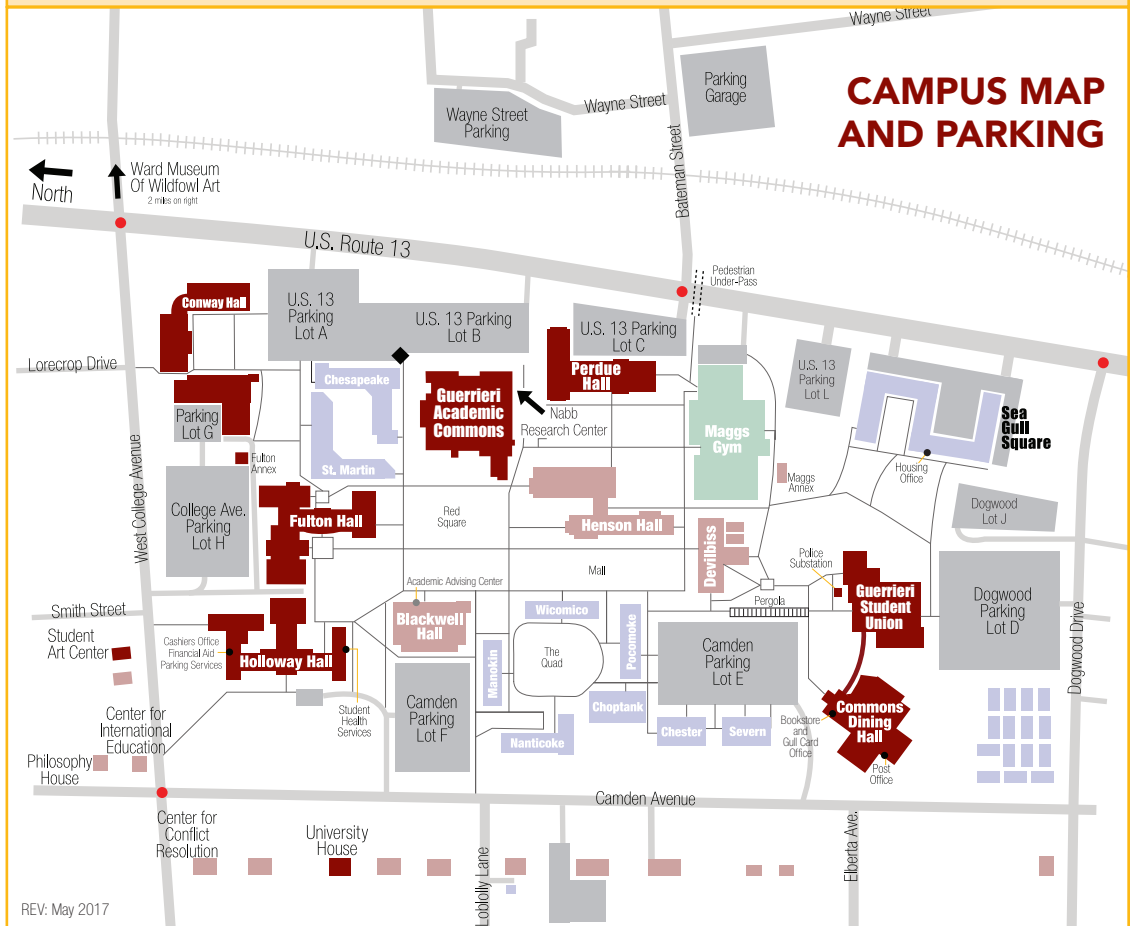
Nabb Research Center for Delmarva History & Culture

Guerrieri Academic Commons, Fourth Floor
Mon.: 10 a.m.-6 p.m.
Tues.-Fri.: 10 a.m.-4:30 p.m.
Sat.: 10 a.m.-2 p.m.
410-543-6312

Salisbury Symphony Orchestra ADMISSION*:

- \$25 adults
 - \$20 seniors 60+
 - \$10 SU faculty/staff
 - \$5 all students
 - * Oct. 20 Family Concert Admission: \$10 Adults, Free Children 12 & Under when Accompanied by an Adult, \$5 All Other Students
- Visit www.SalisburySymphonyOrchestra.org
Click on the "Purchase Tickets" button.
410-543-8366

The buildings highlighted in red are the facilities that most frequently host cultural events.
Please note adjacent parking lots for ease of access. Visitors must display a **visitor parking pass**, which may be obtained free of charge from the Parking Services Office at 410-543-6338 or online at: www.salisbury.edu/parking/visitors.html



REV: May 2017

Ward Museum of Wildfowl Art

909 S. Schumaker Drive
Salisbury, MD; 410-742-4988

HOURS

- Mon.-Sat.: 10 a.m.-5 p.m.
- Sun.: Noon-5 p.m.

ADMISSION*

- SU Faculty, Staff & Students: Free (w/SU ID)
- Adults: \$7,
- Seniors (60 & over): \$5
- Students (K-12): \$3
- College (w/college ID): \$3
- Adults (w/AAA card): \$6
- Family Rate (parents & children 18 & under): \$17

* FREE ADMISSION FOR LOCALS AUG. 1-31: Value Carpet One, a Ward Museum Corporate Sponsor, sponsors free admissions for local museum guests, including residents of Wicomico, Worcester, Somerset, Dorchester, Talbot, Sussex and Accomack counties.

CLASSES & SPECIAL EVENTS: Education events are subject to change. For registration visit: www.wardmuseum.org

- The Art of the Bird with Ellen Lawler: Part 1, Drawing: \$45 Ward members & SU faculty & students; \$55 general
- The Art of the Bird with Ellen Lawler: Part 2, Painting: \$45 Ward members & SU faculty & students; \$55 general
- Golden Goose Reception: \$50 Ward members & SU faculty & students; \$65 general
- Silver Bells Holiday Quarter & Benefit Auction: \$10 in advance; \$15 at the door; \$35 VIP ticket includes admission to the auction, one paddle and access to the VIP room for refreshments from local businesses

The Women's Circle of Salisbury University

For organization and event information:
410-677-0292
skgordy@salisbury.edu
www.facebook.com/suwomenscircle

Institute for Public Affairs and Civic Engagement (PACE)

PACE is a non-partisan institute committed to undergraduate learning that sparks interest in public affairs and civic engagement, and acts as a resource center for local government, nonprofits and public groups.

www.salisbury.edu/pace



World Artists Experiences, Inc.

SU is affiliated with World Artists Experiences, Inc., a non-profit organization committed to developing the vital role of the arts in building bridges of international understanding. By providing educational experiences with world artists in schools, colleges and communities, WAE seeks to foster an appreciation for the rich diversity and cultural commonalities of the world's citizens. Learn more at www.WorldArtists.org. For information about being part of SU's Ambassador Program, call 410-543-6271. ★



World Artists Experiences, Inc.

Delmarva Public Radio

With exciting new programs and a bold new format, Delmarva Public Radio has rededicated itself to providing the best news, music, arts and culture from Delmarva – and around the world.
delmarvpublicradio.net



WSCL 89.5 Fine Arts & Culture
WSDL 90.7 Rhythm & News

SU is an Equal Opportunity/AA/Title IX university and provides reasonable accommodation given sufficient notice to the University office or staff sponsoring the event or program. For more information regarding SU's policies and procedures, please visit www.salisbury.edu/equity.

Events are subject to change; for updates
and corrections, visit: www.salisbury.edu

Flamenco Pasion

4 OCTOBER
THURSDAY

**Compañía Flamenco Eduardo
Guerrero: Flamenco Pasion**
Holloway Hall Auditorium,
7 p.m.

See p. 8 for details

Photo Credit: Beatrix Mexi Molnar

